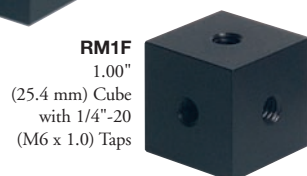


1.00" Construction Cubes

The outer dimensions of these cubes make them ideal for building rigid 3D structures using our Ø1.00" (Ø25.4 mm) pillar posts (see page 103) or our XE25 Rail Systems (see page 218).



RM1G
1.00"
(25.4 mm) Cube
with 1/4" (M6)
Counterbores



RM1F
1.00"
(25.4 mm) Cube
with 1/4"-20
(M6 x 1.0) Taps



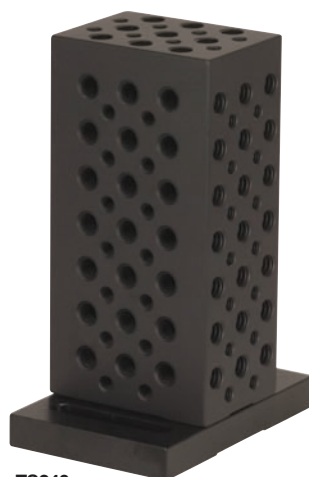
RM1G

Combine the RM1G with XE25 Rails (See Page 218) to Build Custom Enclosures.

ITEM #	METRIC ITEM #	\$	£	€	RMB	DESCRIPTION
RM1F	RM1F/M	\$ 18.00	£ 12.96	€ 15.66	¥ 143.46	Construction Cube with Tapped Holes
RM1G	RM1G*	\$ 16.00	£ 11.52	€ 13.92	¥ 127.52	Construction Cube with Counterbores

*Universal Design is Imperial and Metric Compatible.

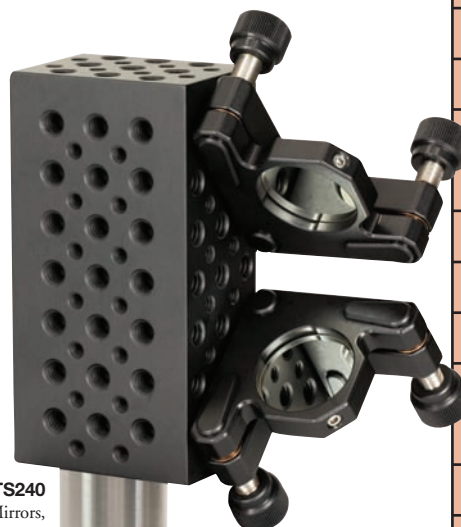
1/4"-20 (M6 x 1.0) and 8-32 (M4 x 0.7) Tapped Tombstone



TS240

- Suitable for Fixing a Multitude of Optical Components
- Comes with a BA2(M) Mounting Base
- Equipped with 93 1/4"-20 (M6 x 1.0) and 64 8-32 (M4 x 0.7) Tapped Holes on 1/2" (12.5 mm) Centers

The Tombstone Mounting Block is compatible with virtually all of our optomechanical mounts, which makes it a versatile solution to an unconventional mounting requirement.



TS240
Kinematic Mounts, Mirrors,
and Post Not Included

ITEM #	METRIC ITEM #	\$	£	€	RMB	DESCRIPTION
TS240	TS240/M	\$ 162.00	£ 116.64	€ 140.94	¥ 1,291.14	1/4"-20 (M6 x 1.0) and 8-32 (M4 x 0.7) Tombstone

Have you seen our...

NEW
product



Touch Screen Power and Energy Meter Console

- ◆ Fiber and Free Space Applications
- ◆ Over 25 Compatible Sensors
- ◆ Measurement Capabilities from 100 pW to 250 W and 185 nm to 25 µm
- ◆ Power and Energy Measurements
- ◆ 5.7" Auto-Rotating, Color Touch Screen
- ◆ USB Stick Data Storage
- ◆ Optional Plug-In Fiber Inspection Camera

For more details, see pages 1548 - 1551