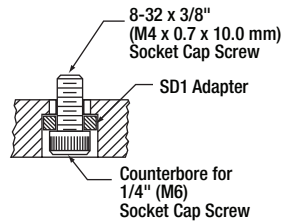


Adapter Ring

SD1



The SD1 Adapter Ring allows an #8 (M4) cap screw to be used in a mounting hole that is counterbored for a Ø1/4" (M6) cap screw. These adapters are sold in packages of 10.



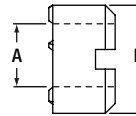
ITEM #	\$	£	€	RMB	DESCRIPTION
SD1*	\$ 7.20	£ 5.18	€ 6.26	¥ 57.38	#8 (M4) to 1/4" (M6) Counterbore Adapter Ring, 10 Pack

*Universal Design, Imperial and Metric Compatible

Threaded Counterbore Adapters

- Convert Counterbores to Tapped Holes
- Slotted Edge for Tightening
- Designed for Slip-Fit with Thorlabs' Counterbores

Threaded counterbore adapters are used to convert a counterbore into a threaded hole. A part such as the KM100 Kinematic Mirror Mount features a counterbore that provides imperial and metric compatibility; a cap screw is typically used to fasten the mount to a post. In some instances, it may be necessary to attach the mount to a post with a fixed threaded stud. The counterbore adapter facilitates this mounting option. These adapters feature a slotted edge that enables tightening or removal.



ITEM #	INTERNAL THREAD (A)	USE IN C-BORE (B)
CBA8E	8-32	#8
CBA25E	1/4"-20	1/4"
CBA4M	M4	M4
CBA6M	M6	M6



ITEM #	\$	£	€	RMB	DESCRIPTION
CBA8E	\$ 5.80	£ 4.18	€ 5.05	¥ 46.23	8-32 Tapped Counterbore Adapter
CBA25E	\$ 7.20	£ 5.18	€ 6.26	¥ 57.38	1/4"-20 Tapped Counterbore Adapter
CBA4M	\$ 5.80	£ 4.18	€ 5.05	¥ 46.23	M4 x 0.7 Tapped Counterbore Adapter
CBA6M	\$ 7.20	£ 5.18	€ 6.26	¥ 57.38	M6 x 1.0 Tapped Counterbore Adapter

Micrometer Barrel Adapters



RBA1

These two slotted brass sleeves are an ideal solution for securing Ø0.375" (Ø9.5 mm) and Ø10.0 mm (Ø0.39") mounting barrels into components designed for Ø0.50" (Ø12.7 mm) barrels. The slotted sleeve allows an externally applied clamping force to be transferred to the mounting barrel.



Micrometer
Sold Separately

ITEM #	\$	£	€	RMB	DESCRIPTION
RBA1	\$ 8.90	£ 6.41	€ 7.74	¥ 70.93	Mounting Barrel Adapter, Ø0.375" to Ø0.50"
RBA2	\$ 8.90	£ 6.41	€ 7.74	¥ 70.93	Mounting Barrel Adapter, Ø10.00 mm to Ø0.50"

NanoMax™ Thumbscrew Drive Adapters

The MCA1 and MCA2 Quick-Connect Adapters are designed for use with many of our DRV adjusters and actuators (see page 603 for compatible items). This allows these adjusters to be utilized in stages with either a Ø3/8" (Ø9.5 mm) barrel for the MCA1 or a Ø10.0 mm (Ø0.39") barrel for the MCA2.



DRV3 Shown with
MCA1 Creates Ø3/8"
Mounting Barrel

ITEM #	\$	£	€	RMB	DESCRIPTION
MCA1	\$ 18.90	£ 13.61	€ 16.44	¥ 150.63	Quick-Connect Adapter for Ø3/8" Barrel
MCA2	\$ 18.90	£ 13.61	€ 16.44	¥ 150.63	Quick-Connect Adapter for Ø10.0 mm Barrel