

For current pricing, please see our website.

Specs updated 6-19-13 -LF

CHAPTERS

Manual Stages

Motorized Stages

Multi-Axis Platforms

Actuators

Controllers

SECTIONS

Linear Translation

Rotation

Goniometers

Have you seen our...

Motorized Actuators for the LNR Stage



See pages XXX - XXX

TravelMax™ 1" Travel, Cross Roller Bearing Stage (Page 1 of 2)

The LNR25 series of stages offer stability and high load capacity, making them ideal solutions for all translation applications. Designed with the highest quality linear rails available, the performance is further enhanced by using thermally matched materials that ensure stability, even in less-than-ideal conditions. The rigidity of the all-steel construction, along with the heavy-duty cross-roller bearings, provides uniform performance over the entire range of motion. Stages can be bolted together in XY, XZ, or XYZ configurations for applications where movement is required in more than one axis.

Features

- Heavy-Duty Cross Roller Bearings
- Thermally Matched All-Steel Construction
- Right- or Left-Handed XYZ Configurable
- Micrometer or Differential Drives
- 1/4"-20 (M6 x 1.0) Mounting Holes

NEW products



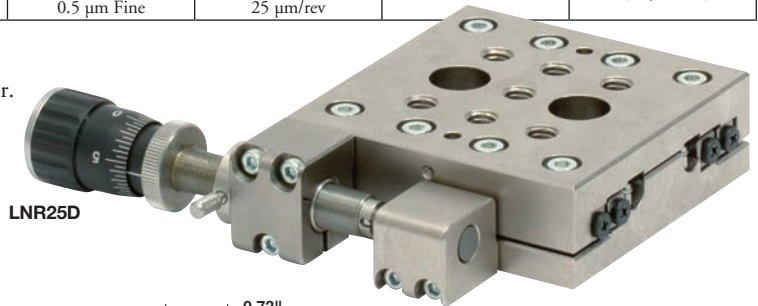
LNR25M
All Steel Construction

Stage Specifications

- **Travel:** 1" (25 mm)
- **Horizontal Load Capacity:** 44 lbs (20 kg)
- **Vertical Load Capacity:** 17.6 lbs (8 kg)
- **Runout Over Full Range:** ±1.5 µm (0.000059")
- **Angular Deviation:** ±1.5 µm
- **Weight with Drive**
 - LNR25M: 1.34 lbs (0.61 kg)
 - LNR25D: 1.26 lbs (0.57 kg)

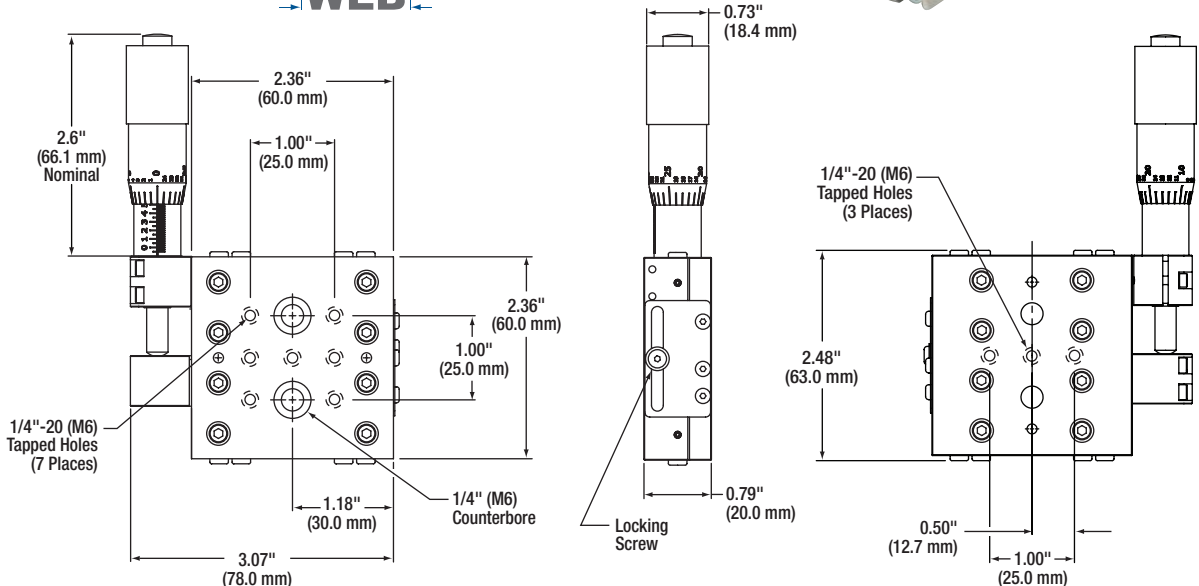
SPECIFICATIONS	ADJUSTMENT RANGE	GRADUATION SPACING	TRAVEL	BARREL	STAGES
Imperial Micrometer Drive (150-811ST)	1.0"	0.001"	0.025"/rev	Ø3/8"	LNR25M
Metric Micrometer Drive (150-801ST)	25 mm	10 µm	500 µm/rev	10 mm	LNR25M/M
Differential Micrometer Drive (DM12)	25 mm Coarse	-	0.5 mm/rev	Ø3/8"	LNR25D, LNR250/M
	250 µm/rev Fine	0.5 µm Fine	25 µm/rev		

For applications that require increased resolution, the LNR25D is fitted with the DM12 differential actuator. The coarse adjustment can be locked using a thumbscrew located on the mounting collar.



LNR25D

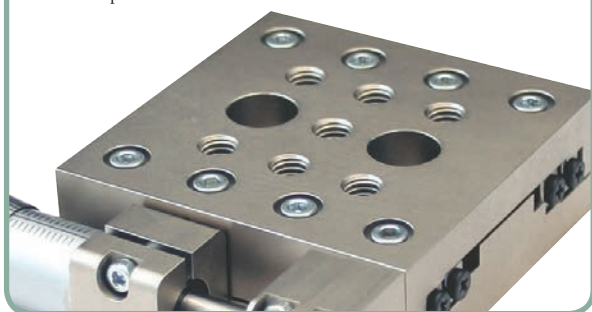
Mechanical
Drawings Available on the **WEB**



Alignment Pins Ensure Alignment as Stages are Assembled into Multiaxis Systems

TravelMax™ 1" Travel, Cross Roller Bearing Stage (Page 2 of 2)

LNR25 Top Plate Detail



Wide Range of Mounting Options

The TravelMax™ was designed with flexibility and functionality in mind. The top surface of the LNR25 stage is equipped with an array of seven 1/4"-20 (M6) tapped holes to maximize the mounting flexibility of components.

Two clearance holes are present in the top platform to allow the stage to be bolted directly to the work surface using the counterbored 1/4" (M6) holes in the base of the stage. The position of the actuator mounting blocks is easily reconfigured to allow left- or right-handed use.

XYZ Configurable

The LNR25P1 Base Plate and LNR25P2 Angle Bracket allow the stages to be configured in left- or right-handed XY, XZ, or XYZ configurations.

Base Plate



LNR25P1

The LNR25P1 base plate (shown above) provides additional mounting options and provides extra clearance between the stage and the work surface. Counterbored clearance holes match up to the tapped holes in the base of the stage. The plate measures 100 mm x 195 mm x 10 mm (3.9" x 7.7" x 0.47").

Angle Bracket

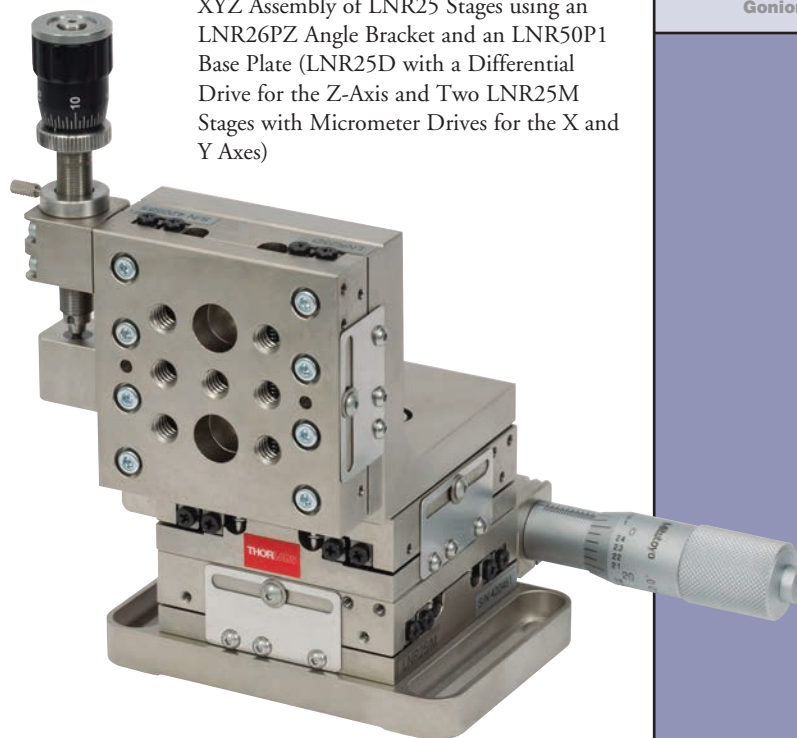


LNR25P2/M

Micrometer Drive TravelMax™ Stage

ITEM #	METRIC ITEM #	\$	£	€	RMB	DESCRIPTION
LNR25M	LNR25M/M	\$ 620.00	£ 446.40	€ 539,40	¥ 4,941.40	1" (25 mm) TravelMax™ Stage with Micrometer Drive
LNR25D	LNR25D/M	\$ 710.00	£ 511.20	€ 617,70	¥ 5,658.70	1" (25 mm) TravelMax™ Stage with Differential Drive
LNR25P1	LNR25P1/M	\$ 89.00	£ 64.08	€ 77,43	¥ 709.33	1" (25 mm) TravelMax™ Series Base Plate
LNR25P2	LNR25P2/M	\$ 112.00	£ 80.64	€ 97,44	¥ 892.64	1" (25 mm) TravelMax™ Series Angle Bracket

XYZ Assembly of LNR25 Stages using an LNR26PZ Angle Bracket and an LNR50P1 Base Plate (LNR25D with a Differential Drive for the Z-Axis and Two LNR25M Stages with Micrometer Drives for the X and Y Axes)



The LNR25P2 angle bracket (shown in the photo to the left) allows the LNR stage to be mounted vertically. When combined with the LNR50P1 described above, it can be used to build an XZ, YZ, or XYZ configuration.