

## ▼ CHAPTERS

Manual Stages

Motorized Stages

Multi-Axis  
Platforms

Actuators

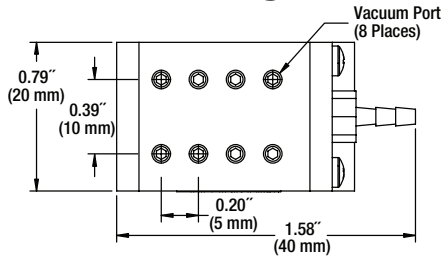
Controllers

## ▼ SECTIONS

3-Axis Roller  
Bearing Platforms3-Axis Flexure  
Platforms4-Axis Flexure  
Platforms5-Axis Flexure  
Platforms6-Axis Flexure  
Platforms

Flexure Accessories

## Vacuum Waveguide Mount



- Eight User-Selectable Vacuum Ports Provide Support for a Broad Range of Optic Sizes
- Small, Compact Design Allows Easy Access to Your Planar Optical Element
- Adds 0.43" (11 mm) to Flexure Stage Deck Height

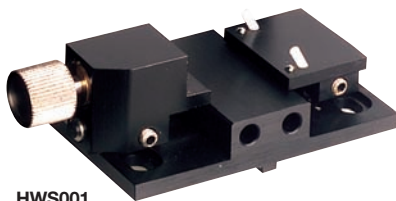


The HWV001 waveguide holder utilizes a vacuum to provide the holding force to secure planar waveguide devices. The mount consists of a platform with eight access ports to the internal vacuum chamber. By removing the conical-tipped setscrews that lie underneath the optical element, a vacuum-generated holding force appropriate for the size of the component can be obtained.

ITEM #	\$	£	€	RMB	DESCRIPTION
HWV001*	\$ 195.00	£ 140.40	€ 169,65	¥ 1,554.15	Vacuum Waveguide Mount

\*Universal Design, Imperial and Metric Compatible

## Adjustable Waveguide Mount



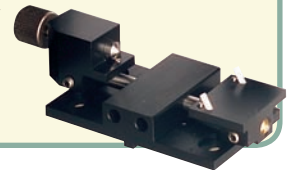
HWS001

The HWS001 adjustable waveguide mount, while originally intended for use with planar waveguides, is useful for mounting a broad range of optical devices. Any thin [ $<0.08"$  ( $<2$  mm) thick] rectangular device that needs to be integrated into an optical system built from one of our multi-axis flexure stages can be mounted in this holder provided the width of the device is less than 38 mm. The narrowest device that this mount is designed to accommodate is 0.16" (4 mm). This broad range of sizes is supported by moving the two sliding platforms (see photographs to the right) to within a few millimeters of the width of the device and then locking them into position with the setscrews; a gentle holding force is applied via a spring-loaded plunger that pushes the optical element against two angled white plastic pegs. A kinematic three-point contact is also achieved using three hardened chromium steel balls as optical support points.

- Adjustable Optic Mount Accepts Thin Rectangular Elements from 0.16" (4 mm) to 1.50" (38 mm) in Width, up to 2 mm Thick
- Three Points of Contact Provided by Hardened, Precision-Ground Chromium Steel Balls
- An Adjustable Holding Force is Provided by a Spring-Loaded Plunger that is Beveled so that it Provides a Slight Downward Pressure on the Optical Element



These two photographs show the HWS001 fully compressed (above) so that it is ready to clamp a 0.16" (4 mm) wide optical element as well as fully open (below) so that it can accept a 1.5" (38 mm) optic. The two movable portions of the adjustable clamp are locked in place with the two setscrews that are visible on the left and right side of the device.



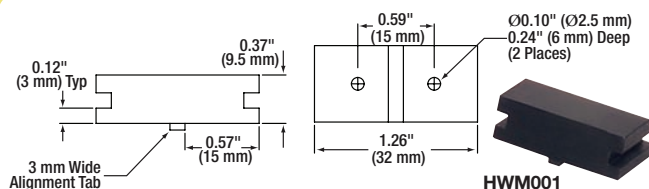
ITEM #	\$	£	€	RMB	DESCRIPTION
HWS001*	\$ 330.00	£ 237.60	€ 287,10	¥ 2,630.10	Adjustable Waveguide Mount

\*Universal Design, Imperial and Metric Compatible

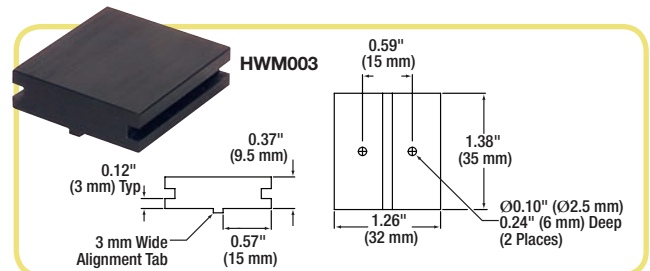
## Waveguide Mounts

- Available in Two Lengths: 0.39" (10.0 mm) and 1.38" (35 mm)
- Width of Both Mounts: 1.26" (32.0 mm)
- Height of Both Mounts: 0.37" (9.5 mm)

The top surface of these waveguide mounts is 0.12" (3.0 mm) below the standard 0.5" (12.5 mm) optical axis height for flexure accessories. The smooth top surface is ideal for bonding waveguides to, via either tape or glue.



HWM001



ITEM #	\$	£	€	RMB	DESCRIPTION
HWM001*	\$ 65.00	£ 46.80	€ 56,55	¥ 518.05	Standard Waveguide Mount, 10 mm Length
HWM003*	\$ 60.00	£ 43.20	€ 52,20	¥ 478.20	Standard Waveguide Mount, 32 mm Length

\*Universal Design, Imperial and Metric Compatible