

For current pricing,
please see our website.

Updated
2/1/12
LF

Laser Scanning Essentials Kits



Features

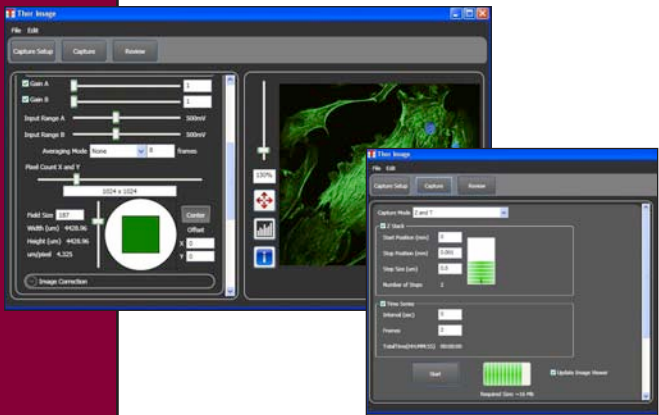
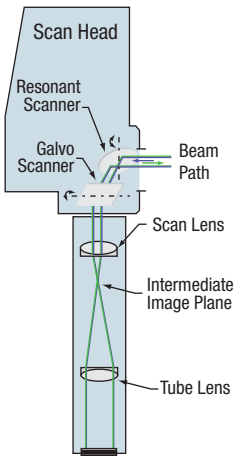
- Includes Core Components to Build a Laser Scanning Imaging System
 - Scan Head with Galvo-Resonant Scanner Pair
 - Scan and Tube Lenses
 - Two-Channel Electronics Control and Computer with 24" Monitor
 - ThorImageLS™ Software
- 4-Channel and High-Sensitivity Upgrades Available Upon Request
- Visible (LSKIT-VIS) and IR (LSKIT-IR) Versions

The Laser Scanning Essentials Kit is Thorlabs' solution for researchers who desire to build their own laser scanning microscope. Two versions of kit are available: LSKIT-VIS for the 400 – 750 nm transmission range and LSKIT-IR for the 650 – 1050 nm range. This kit contains the components necessary to construct a modular laser scanning imaging system. The design provides the flexibility necessary to integrate a custom system to meet individual imaging needs.

The scan head contains a high-speed resonant scanner galvanometer pair, which uses single point illumination to scan across the sample for fast image acquisition (30 fps at 512 x 512 pixel resolution). The scan head also houses filter and beam steering cubes that have drop-in designs, enabling quick exchange of mirror sets.

Along with the scan head, these kits include scan and tube lenses, an electronic control unit, a computer with 24" monitor, and ThorImageLS software. The electronic control unit for the LSKIT-VIS and LSKIT-IR is designed for two-channel detection with multi-alkaline, standard-sensitivity PMTs (sold separately, see page 1729). The included scan and tube lenses for these systems can also be purchased separately (see pages 1713 – 1716). The LSKIT-VIS utilizes the CLS-SL scan lens and ITL200 tube lens, whereas the LSKIT-IR utilizes the MPM-SL scan/tube lens combo. Upon request, these kits can be upgraded to four channels and for use with high-sensitivity, GaAsP PMTs.

Schematic Diagram and Beam Path of Laser Scanning Essentials Kit



SPECIFICATIONS

Excitation

| | |
|-------------------------|--|
| Transmission Range | LSKIT-VIS: 400 – 750 nm LSKIT-IR: 650 – 1050 nm |
| Diffraction-Limited FOV | LSKIT-VIS: FN25 (486 – 750 nm); FN23 (400 – 700 nm) LSKIT-IR: 16 mm Diagonal Square (Max) at the Intermediate Plane |
| Imaging Speed | 30 fps @ 512 x 512 Pixels 120 fps @ 128 x 128 Pixels 2 fps @ 4000 x 4000 pixels (Bi-Directional Scan) |
| Scanner | X: Resonant Scanner Y: Galvanometer Scanner |

Thorlabs' Laser Scanning Kits include ThorImageLS™ user software for high-speed acquisition and control (see page 1666 for details).

| ITEM # | \$ | £ | € | RMB | DESCRIPTION |
|-----------|--------------|-------------|-------------|--------------|---|
| LSKIT-VIS | \$ 48,500.00 | £ 34,920.00 | € 42,195.00 | ¥ 386,545.00 | Visible Laser Scanning Essentials Kit, 400 – 750 nm |
| LSKIT-IR | CALL | CALL | CALL | CALL | IR Laser Scanning Essentials Kit, 680 – 1400 nm |