

For current pricing, please see our website.

CHAPTERS

Tables/
Breadboards

Mechanics

Optomechanic
Devices

Kits

Lab Supplies

SECTIONS

Breadboards

Breadboard
Supports

Breadboard
Accessories

ScienceDesk

ScienceDesk
Accessories

Optical Tables

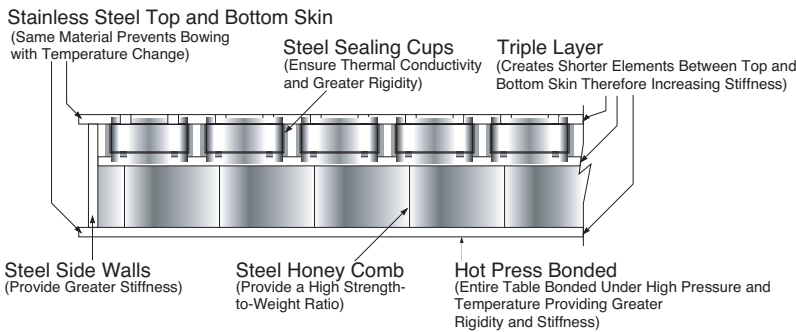
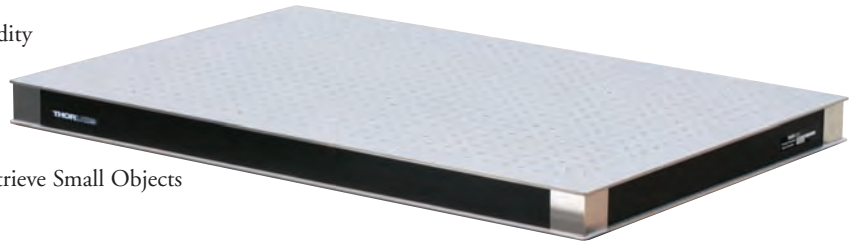
Table Supports

Optical Table
Accessories

PerformancePlus™ Series of Optical Breadboards (Page 1 of 2)

PerformancePlus™ Optical Breadboards are designed specifically for demanding R&D applications. These breadboards feature enhanced damping, increased rigidity, and sealed mounting holes.

- Triple-Plate, Double-Core StableTop™ Construction Significantly Increases Rigidity
- Enhanced Damping Improves Dynamic Performance for the Most Critical Laboratory Applications
- Sealed Mounting Holes Make it Simple to Contain and Clean Up Spills or to Retrieve Small Objects
- Plated Steel Honeycomb Structure



Sizes Shown Here are Stocked for Immediate Shipment. Additional Sizes up to 4' x 8' (1250 mm x 2500 mm) are Available. Visit www.thorlabs.com for Details.

Specifications

- **Flatness:** ±0.004" (0.10 mm) Over Any 1 ft² (0.3 m²) Area
- **Thickness:** 2.4" (60 mm) or 4.3 (110 mm)
- **Construction:** Triple-Plate, Double Honeycomb-Core, Athermalized Design with Matching Plate Materials for Maximum Thermal Stability
- **Damping:** Enhanced (Proprietary Broadband Damping)
- **Main Core:** High-Density Plated Steel Honeycomb
- **Intermediate Core**
 - Plated Steel Sealing Cup Honeycomb Structure, 0.15" (13 mm) Thick
 - Cell Size Approximately 0.25 in² (1.6 cm²)
- **Top Plate:** Magnetic Stainless Steel, 3/16" (5 mm) Thick, Brushed Finish
- **Bottom Plate:** Magnetic Stainless Steel, 3/16" (5 mm) Thick
- **Sides:** Black Laminated Steel
- **Hole Spacing**
 - Imperial: 1/4"-20 on 1" Centers
 - Metric: M6 on 25 mm Centers
- **Edge of Top Plate to First Hole**
 - Imperial: 2"
 - Metric: 50 mm
- **Maximum Screw Depth:** 5/8" (16 mm) from Breadboard Surface

Imperial PerformancePlus™ Optical Breadboards, 2.4" Thick

ITEM #	\$	£	€	RMB	DIMENSIONS	WEIGHT*
PBI11102	\$ 705.00	£ 507.60	€ 613.35	¥ 5,618.85	2' x 1' x 2.4"	35 lbs/16 kg
PBI11105	\$ 934.20	£ 672.62	€ 812.75	¥ 7,445.57	2' x 2' x 2.4"	95 lbs/43 kg
PBI11106	\$ 1,138.00	£ 819.36	€ 990.06	¥ 9,069.86	3' x 2' x 2.4"	141 lbs/62 kg
PBI11111	\$ 1,276.40	£ 919.01	€ 1,110.47	¥ 10,172.91	3' x 2.5' x 2.4"	136 lbs/78 kg
PBI11112	\$ 1,598.20	£ 1,150.70	€ 1,390.43	¥ 12,737.65	4' x 2.5' x 2.4"	225 lbs/102 kg
PBI11115	\$ 1,820.90	£ 1,311.05	€ 1,584.18	¥ 14,512.57	4' x 3' x 2.4"	268 lbs/121 kg

*The weights given are for the breadboards alone and do not include packaging.

Metric PerformancePlus™ Optical Breadboards, 60 mm Thick

ITEM #	\$	£	€	RMB	DIMENSIONS	WEIGHT*
PBI51502	\$ 696.80	£ 501.70	€ 606.22	¥ 5,553.50	600 mm x 300 mm x 60 mm	29 lbs/13 kg
PBI51528	\$ 780.00	£ 561.60	€ 678.60	¥ 6,216.60	600 mm x 450 mm x 60 mm	79 lbs/38 kg
PBI51505	\$ 900.50	£ 648.36	€ 783.44	¥ 7,176.99	600 mm x 600 mm x 60 mm	90 lbs/41 kg
PBI51510	\$ 1,144.40	£ 823.97	€ 995.63	¥ 9,120.87	750 mm x 750 mm x 60 mm	139 lbs/63 kg
PBI51506	\$ 1,136.30	£ 818.14	€ 988.58	¥ 9,056.31	900 mm x 600 mm x 60 mm	114 lbs/52 kg
PBI51511	\$ 1,298.50	£ 934.92	€ 1,129.70	¥ 10,349.05	900 mm x 750 mm x 60 mm	172 lbs/78 kg
PBI51512	\$ 1,566.80	£ 1,128.10	€ 1,363.12	¥ 12,487.40	1200 mm x 750 mm x 60 mm	225 lbs/102 kg
PBI51515	\$ 1,782.40	£ 1,283.33	€ 1,550.69	¥ 14,205.73	1200 mm x 900 mm x 60 mm	297 lbs/135 kg
PBI51516	\$ 2,104.30	£ 1,515.10	€ 1,830.74	¥ 16,771.27	1500 mm x 900 mm x 60 mm	328 lbs/149 kg
PBI51517	\$ 2,426.10	£ 1,746.79	€ 2,110.71	¥ 19,336.02	1800 mm x 900 mm x 60 mm	300 lbs/136 kg

*The weights given are for the breadboards alone and do not include packaging.

NEW

PerformancePlus™ Series Optical Breadboards (Page 2 of 2)

NEW
versions

Features

- Thicker Breadboard for Superior Stiffness
- Other Sizes Available up to 8' x 4' (2500 mm x 1250 mm)



Sizes Shown Here are Stocked for Immediate Shipment. Please Visit www.thorlabs.com for Additional Size Options.

Imperial PerformancePlus™ Optical Breadboards, 4.3" Thick

ITEM #	\$	£	€	RMB	DIMENSIONS	WEIGHT*
PBI12115	\$ 2,097.10	£ 1,509.91	€ 1,824.48	¥ 16,713.89	4' x 3' x 4.3"	301 lbs/137 kg
PBI12116	\$ 2,405.30	£ 1,731.82	€ 2,092.61	¥ 19,170.24	5' x 3' x 4.3"	384 lbs/174 kg
PBI12117	\$ 2,713.50	£ 1,953.72	€ 2,360.75	¥ 21,626.60	6' x 3' x 4.3"	477 lbs/216 kg
PBI12129	\$ 4,148.00	£ 2,986.56	€ 3,608.76	¥ 33,059.56	6' x 5' x 4.3"	721 lbs/327 kg

*The weights given are for the breadboards alone and do not include packaging.

Metric PerformancePlus™ Optical Breadboards, 110 mm Thick

ITEM #	\$	£	€	RMB	DIMENSIONS	WEIGHT*
PBI52510	\$ 1,486.80	£ 1,070.50	€ 1,293.52	¥ 11,849.80	750 mm x 750 mm x 110 mm	181 lbs/82 kg
PBI52512	\$ 1,836.20	£ 1,322.06	€ 1,597.49	¥ 14,634.51	1200 mm x 750 mm x 110 mm	251 lbs/114 kg
PBI52515	\$ 2,022.30	£ 1,456.06	€ 1,759.40	¥ 16,117.73	1200 mm x 900 mm x 110 mm	326 lbs/148 kg
PBI52516	\$ 2,313.50	£ 1,665.72	€ 2,012.75	¥ 18,438.60	1500 mm x 900 mm x 110 mm	397 lbs/180 kg
PBI52525	\$ 3,466.40	£ 2,495.81	€ 3,015.77	¥ 27,627.21	1800 mm x 1250 mm x 110 mm	613 lbs/278 kg
PBI52529	\$ 4,099.00	£ 2,951.28	€ 3,566.13	¥ 32,669.03	1800 mm x 1500 mm x 110 mm	712 lbs/323 kg

*The weights given are for the breadboards alone and do not include packaging.

Breadboards Without Mounting Holes

Thorlabs' Performance™ Optical Breadboards are 2.4" (60 mm) thick optical breadboards and offer the same construction techniques as our standard Performance Series range but without drilled holes in the top plate. They provide high stiffness and standard damping, making them an ideal solution for microscopy applications.

Features

- Design for Excellent Thermal Stability
- Low Deflection Under Load
- Plated Steel Honeycomb Core Provides Both Static and Dynamic Rigidity
- Magnetic Stainless Steel Top and Bottom Plate
- Excellent Surface Flatness

Specifications

- **Flatness:** ±0.004" (±0.10 mm) over any 1 ft² (0.3 m²) Area
- **Thickness:** 2.4" (60 mm)
- **Construction:** Double Plate, Single Honeycomb Core, Athermalized Design
- **Core:** High-Density, Double-Plated Steel Honeycomb
- **Top and Bottom Plates:** Magnetic Stainless Steel, 3/16" (5 mm) Thick, Matched Materials for Athermalized Design

- **Damping:** Proprietary Broadband Damping
- **Sides:** Black Laminated Steel
- **Top Plate Finish:** Brushed Steel

Imperial Performance Series Breadboards, No Holes

ITEM #	\$	£	€	RMB	SIZE	WEIGHT*
PBH11106/NH	\$ 689.00	£ 496.08	€ 599.43	¥ 5,491.33	3' x 2' x 2.4"	134 lbs/61 kg
PBH11111/NH	\$ 869.00	£ 625.68	€ 756.03	¥ 6,925.93	3' x 2.5' x 2.4"	148 lbs/67 kg
PBH11112/NH	\$ 985.00	£ 709.20	€ 856.95	¥ 7,850.45	4' x 2.5' x 2.4"	194 lbs/88 kg
PBH11115/NH	\$ 1,054.00	£ 758.88	€ 916.98	¥ 8,400.38	4' x 3' x 2.4"	231 lbs/105 kg

*The weights given are for the breadboards alone and do not include packaging.

Metric Performance Series Breadboards, No Holes

ITEM #	\$	£	€	RMB	SIZE	WEIGHT*
PBH51511/NH	\$ 869.00	£ 625.68	€ 756.03	¥ 6,925.93	900 mm x 750 mm x 60 mm	132 lbs/60 kg
PBH51512/NH	\$ 985.00	£ 709.20	€ 856.95	¥ 7,850.45	1200 mm x 750 mm x 60 mm	176 lbs/80 kg
PBH51515/NH	\$ 1,054.00	£ 758.88	€ 916.98	¥ 8,400.38	1200 mm x 900 mm x 60 mm	214 lbs/97 kg

*The weights given are for the breadboards alone and do not include packaging.

NEW
versions



Not the size you are looking for?

Don't worry. We make that too. Same cost. Small lead time.