

## Optomechanics

### Mounting Basics

### Optical Rails

### Mirror Mounts

### Lens Mounts

### Filter Mounts

### Rotation Mounts

### Adapters

### V-Mounts

### Apertures & Iris Diaphragms

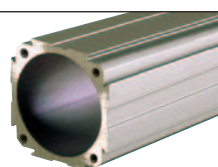
### Lens Tubes

### Cage Systems

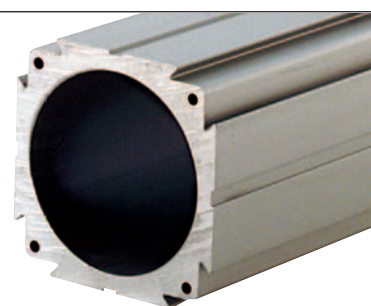
## XT34 & XT66 Construction Rails

The XT34 and XT66 are complementary rails to our XT95 rail system. Both ends of the XT66 and XT34 are tapped with four M3 holes for mounting various adapter plates.

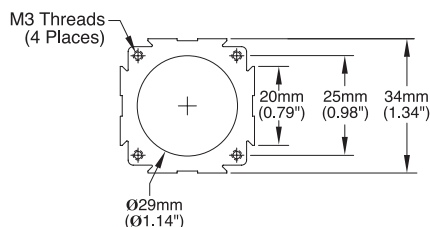
- Precision Cut
- Clear Anodized
- Ideal for Compact Optical Assemblies
- Compatible With SM1/SM2 Series Lens Tubes
- Provides Rigid Support Structure for Optical Setups
- Custom Lengths Available



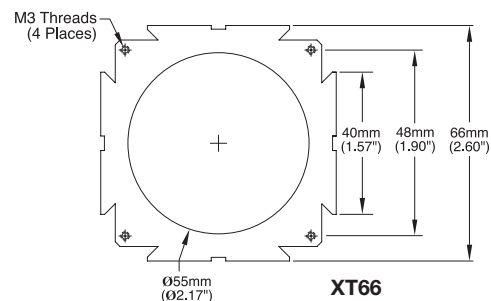
XT34



XT66



XT34



XT66

### XT34

ITEM#	\$	£	€	RMB	DESCRIPTION
XT34-50	\$ 10.20	£ 6.40	€ 9,50	¥ 97.40	50mm XT34 Rail
XT34-100	\$ 12.80	£ 8.10	€ 11,90	¥ 122.20	100mm XT34 Rail
XT34-200	\$ 14.80	£ 9.30	€ 13,80	¥ 141.30	200mm XT34 Rail
XT34-500	\$ 23.00	£ 14.50	€ 21,40	¥ 219.70	500mm XT34 Rail
XT34-1000	\$ 38.30	£ 24.10	€ 35,60	¥ 365.80	1000mm XT34 Rail

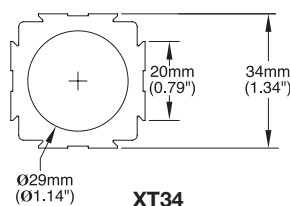
### XT66

ITEM#	\$	£	€	RMB	DESCRIPTION
XT66-100	\$ 18.40	£ 11.60	€ 17,10	¥ 175.70	100mm XT66 Rail
XT66-200	\$ 24.50	£ 15.40	€ 22,80	¥ 234.00	200mm XT66 Rail
XT66-500	\$ 38.80	£ 24.40	€ 36,10	¥ 370.50	500mm XT66 Rail
XT66-750	\$ 63.20	£ 39.80	€ 58,80	¥ 603.60	750mm XT66 Rail
XT66-1000	\$ 81.10	£ 51.10	€ 75,40	¥ 774.50	1000mm XT66 Rail

## XT34 Unanodized Raw Construction Rails

The XT34RL2 is offered as an unanodized and rough-cut raw extrusion for our customers who prefer machining and finishing their own rails.

- Raw Extrusion for Custom Applications
- Rough-Cut Lengths 2m (~6ft)



XT34

XT34RL2

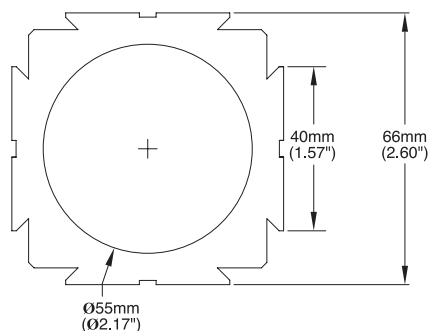


ITEM#	\$	£	€	RMB	DESCRIPTION
XT34RL2	\$ 39.30	£ 24.80	€ 36,50	¥ 375.30	Raw XT34 Extrusion, 2 Meters

## XT66 Unanodized Raw Construction Rails

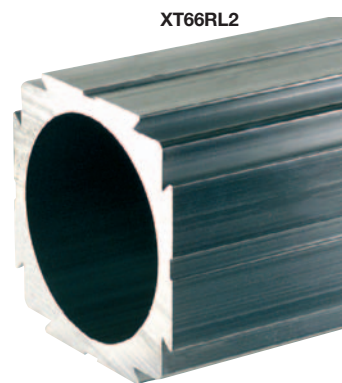
The XT66RL2 is offered as an unanodized and rough-cut raw extrusion for our customers who prefer machining and finishing their own rails.

- Raw Extrusion for Custom Applications
- Rough-Cut Lengths 2m (~6ft)



XT66

XT66RL2



ITEM#	\$	£	€	RMB	DESCRIPTION
XT66RL2	\$ 106.10	£ 66.80	€ 98,70	¥ 1,013.30	Raw XT66 Extrusion, 2 Meters