

Optomechanics

Mounting Basics

Optical Rails

Mirror Mounts

Lens Mounts

Filter Mounts

Rotation Mounts

Adapters

V-Mounts

Apertures & Iris Diaphragms

Lens Tubes

Cage Systems

XT34 Mounting Dovetail

- Compatible With Metric and Imperial Post Holders
- Ideal for Use With Our XT34 Rail
- Convenient for Switching Mounts In and Out of the Optical Path

The Thorlabs mounting dovetails are designed to be used in combination with the XT34C1 and XT34C2 dovetail clamps. Optomechanical components can be attached to the mount via a counterbored clearance hole for 1/4"-20 or M6 low profile socket cap screws* (see drawing). These mounting dovetails are basic building blocks for the XT34 Rail System.

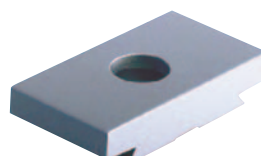
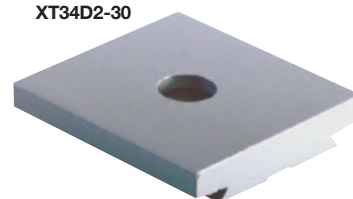
*Requires Low Profile Socket Cap Screws: 1/4"-20 Thread SH25LP38
M6 Thread SH6M10LP



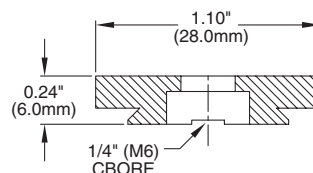
XT34D2-50



XT34D2-30



XT34D2-15

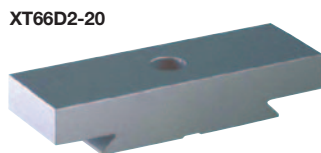


SH6M10LP
(SH25LP38)

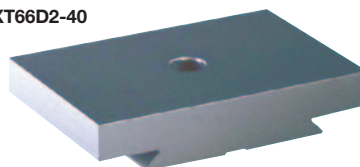
ITEM#	\$	£	€	RMB	LENGTH	DESCRIPTION
XT34D2-15	\$ 9.70	£ 6.10	€ 9.00	¥ 92.60	15mm (0.59")	XT34 Mounting Dovetail With 1/4"-20 (M6) Counterbore
XT34D2-30	\$ 10.70	£ 6.70	€ 10.00	¥ 102.20	30mm (1.18")	XT34 Mounting Dovetail With 1/4"-20 (M6) Counterbore
XT34D2-50	\$ 12.80	£ 8.10	€ 11.90	¥ 122.20	50mm (1.97")	XT34 Mounting Dovetail With 1/4"-20 (M6) Counterbore
SH25LP38	\$ 21.60	£ 13.60	€ 20.10	¥ 206.30	—	Low-Profile 1/4"-20 Cap Screws, Sold in Box of 100
SH6M10LP	\$ 21.60	£ 13.60	€ 20.10	¥ 206.30	—	Low-Profile M6 Cap Screws, Sold in box of 100

XT66 Mounting Dovetail

XT66D2-20



XT66D2-40



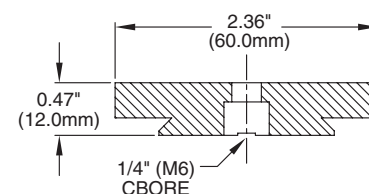
XT66D2-50



Thorlabs' mounting dovetails are designed to be used in combination with the XT66C1 and XT66C2 dovetail clamps. Optomechanical components can be attached to the dovetail via a counterbored clearance hole for 1/4" or M6 socket cap screws* (see drawing to right). These mounting dovetails are basic building blocks for the XT66 Rail System.

Requires Low-Profile Socket Cap Screws: 1/4"-20 Thread SH25LP38
M6 Thread SH6M10LP

- Compatible With Metric and Imperial Post Holders
- Mounts Our Standard Posts to the XT66 Rail System



ITEM#	\$	£	€	RMB	LENGTH	DESCRIPTION
XT66D2-20	\$ 9.70	£ 6.10	€ 9.00	¥ 92.60	20mm (0.79")	XT66 Mounting Dovetail With 1/4"-20 (M6) Counterbore
XT66D2-40	\$ 11.70	£ 7.40	€ 10.90	¥ 111.70	40mm (1.57")	XT66 Mounting Dovetail With 1/4"-20 (M6) Counterbore
XT66D2-50	\$ 12.80	£ 8.10	€ 11.90	¥ 122.20	50mm (1.97")	XT66 Mounting Dovetail With 1/4"-20 (M6) Counterbore