

Optomechanics

Mounting Basics

Optical Rails

Mirror Mounts

Lens Mounts

Filter Mounts

Rotation Mounts

Adapters

V-Mounts

Apertures & Iris Diaphragms

Lens Tubes

Cage Systems

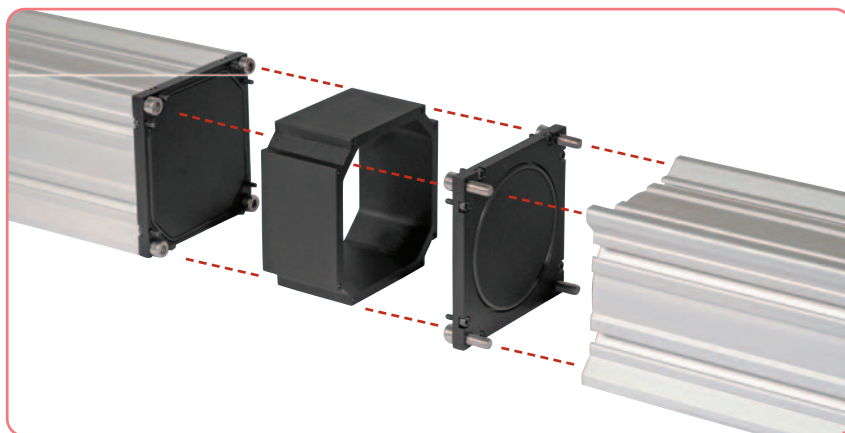
XT95 Instrumentation Box

The XT95B50 and XT95B100 provide a vacuum-tight box that resides within an XT95 structure. Each end of the box is fitted with vacuum-tight plates (accomplished with Viton O-Rings) that fasten directly to the ends of XT95 rails. These boxes are ideal for housing instrumentation required for vacuum-dependent experimentation.

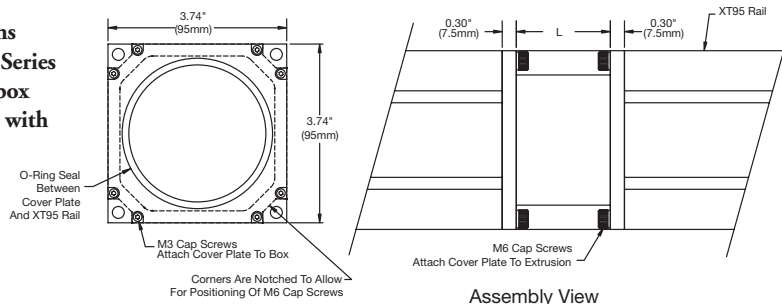
These instrumentation boxes are available in two lengths: the XT95B50 measures 50mm and the XT95B100 measures 100mm.

- Two Models: XT95B50 50mm Length and XT95B100 100mm Length
- Fastens Directly to XT95 Rail
- Includes Eight M6, 16 M3 Stainless Steel Socket Head Screws, and Four O-Rings

O-Ring Seals
Both Box and Tube



These photographs
show the XT95B Series
instrumentation box
assembled in-line with
XT95 rails.



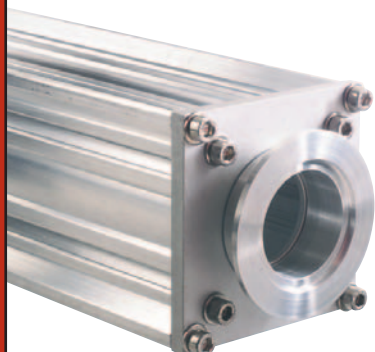
Complete mechanical drawings can be downloaded from the web.

ITEM#	\$	£	€	RMB	DESCRIPTION
XT95B50	\$ 68.30	£ 43.00	€ 63.50	¥ 652.30	50mm Deep Instrumentation Box
XT95B100	\$ 90.80	£ 57.20	€ 84.40	¥ 867.10	100mm Deep Instrumentation Box

XT95 Vacuum Adapter

The XT95V1 Vacuum Adapter provides a means to draw a vacuum in our XT95 flight tubes. An industry standard NW50 flange provides the connection and a Viton O-ring provides the vacuum seal. The large plate fastens directly to the end of an XT95 rail.

- Quick Flange Vacuum Seal
- NW50 Vacuum Flange
- Vacuum Rated to 10^{-6} Torr



XT95V1
Rail Sold Separately



ITEM#	\$	£	€	RMB	DESCRIPTION
XT95V1	\$ 73.40	£ 46.20	€ 68.30	¥ 701.00	XT95 Vacuum Adapter