

Optical Systems

Free Space Isolators

E-O Devices

Spherical Singlets

Multi-Element Lenses

Cylindrical Lenses

Aspheric Lenses

Mirrors

Diffusers & Lens Arrays

Windows

Prisms

Gratings

Polarization Optics

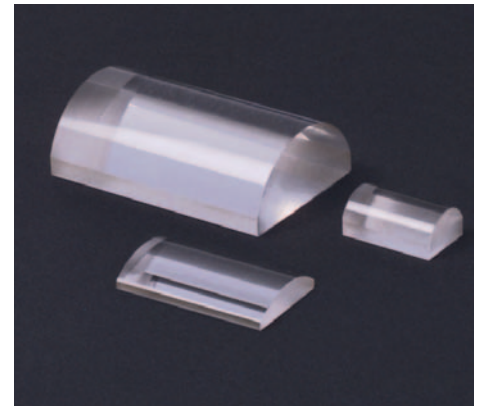
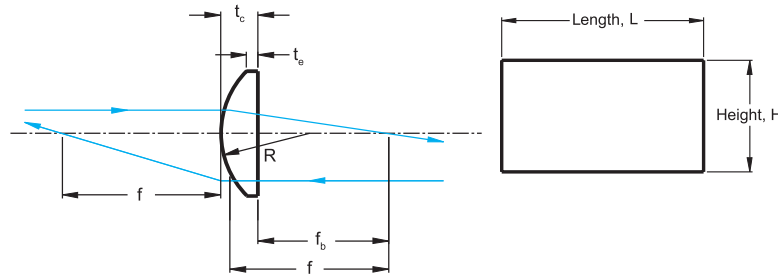
Beamsplitters

Filters & Attenuators

Gas Cells

BK7: Plano-Convex Cylindrical Lenses

Positive cylindrical lenses are ideal for applications requiring magnification in one dimension. While spherical lenses act symmetrically in two dimensions on an incident ray, cylindrical lenses act in the same manner but only in one dimension. A typical application is to use a pair of cylindrical lenses to provide anamorphic shaping of a beam. A pair of positive cylindrical lenses can be used to collimate and circularize the output of a laser diode. Another application possibility would be to use a single lens to focus a diverging beam onto a linear detector array.



Specifications

- **Material:** BK7
- **Wavelength Range:** 350nm-2.0µm
- **Design Wavelength:** 587.6nm
- **Length Tolerance:** +0.00/-0.10mm
- **Height Tolerance:** +0.00/-0.10mm
- **Focal Length Tolerance:** ±1%
- **Scratch/Dig:** 60/40
- **Centration:**
For $f \leq 50\text{mm}$: $\leq 5\text{arcmin}$
For $f > 50\text{mm}$: $\leq 3\text{arcmin}$
- **Clear Aperture:** >90%

COATING	WAVELENGTH	\$	£	€	RMB
-A	350-650nm	\$ 9.20	£ 5.80	€ 8,60	¥ 87.90
-B	650-1050nm	\$ 9.20	£ 5.80	€ 8,60	¥ 87.90
-C	1050-1620nm	\$ 12.20	£ 7.70	€ 11,30	¥ 116.50

Standard Broadband AR Coatings

To order the lens with a standard broadband AR Coating, add the coating code to the Item#, and then add the coating cost to the lens price.

Plano-Convex Cylindrical Lenses: Material BK7, f = 3.9-19.7mm

ITEM#	f (mm)	H (mm)	L (mm)	PRICE UNCOATED (for Coated Lens Add Suffix)				R (mm)	t _c (mm)	t _e (mm)
				\$	£	€	RMB			
LJ1598L1	3.9	4.0	6.0	\$ 41.90	£ 26.40	€ 39.00	¥ 400.10	2.0	3.8	2.0
LJ1598L2	3.9	4.0	8.0	\$ 47.90	£ 30.20	€ 44.50	¥ 457.40	2.0	3.8	2.0
LJ1310L1	4.0	4.0	6.0	\$ 41.90	£ 26.40	€ 39.00	¥ 400.10	2.1	3.6	2.0
LJ1310L2	4.0	4.0	8.0	\$ 47.90	£ 30.20	€ 44.50	¥ 457.40	2.1	3.6	2.0
LJ1918L1	5.8	4.0	6.0	\$ 41.90	£ 26.40	€ 39.00	¥ 400.10	3.0	2.8	2.0
LJ1918L2	5.8	4.0	8.0	\$ 47.90	£ 30.20	€ 44.50	¥ 457.40	3.0	2.8	2.0
LJ1227L1	6.4	6.0	8.0	\$ 71.80	£ 45.20	€ 66.80	¥ 685.70	3.3	4.0	2.0
LJ1227L2	6.4	6.0	12.0	\$ 82.80	£ 52.20	€ 77.00	¥ 790.70	3.3	4.0	2.0
LJ1874L1	7.7	7.0	9.0	\$ 48.90	£ 30.80	€ 45.50	¥ 467.00	4.0	4.1	2.0
LJ1874L2	7.7	7.0	14.0	\$ 56.90	£ 35.80	€ 52.90	¥ 543.40	4.0	4.1	2.0
LJ1822L1	9.7	10.0	12.0	\$ 56.90	£ 35.80	€ 52.90	¥ 543.40	5.0	6.7	2.0
LJ1822L2	9.7	10.0	20.0	\$ 65.80	£ 41.50	€ 61.20	¥ 628.40	5.0	6.7	2.0
LJ1878L1	10.0	10.0	12.0	\$ 56.90	£ 35.80	€ 52.90	¥ 543.40	5.2	5.9	2.0
LJ1878L2	10.0	10.0	20.0	\$ 65.80	£ 41.50	€ 61.20	¥ 628.40	5.2	5.9	2.0
LJ1942L1	12.7	10.0	12.0	\$ 47.90	£ 30.20	€ 44.50	¥ 457.40	6.6	4.3	2.0
LJ1942L2	12.7	10.0	20.0	\$ 54.90	£ 34.60	€ 51.10	¥ 524.30	6.6	4.3	2.0
LJ1805L1	12.7	13.0	15.0	\$ 54.90	£ 34.60	€ 51.10	¥ 524.30	6.6	7.7	2.0
LJ1805L2	12.7	13.0	26.0	\$ 62.90	£ 39.60	€ 58.50	¥ 600.70	6.6	7.7	2.0
LJ1909L1	13.7	13.0	15.0	\$ 54.90	£ 34.60	€ 51.10	¥ 524.30	7.1	6.3	2.0
LJ1909L2	13.7	13.0	26.0	\$ 62.90	£ 39.60	€ 58.50	¥ 600.70	7.1	6.3	2.0
LJ1636L1	15.0	10.0	12.0	\$ 47.90	£ 30.20	€ 44.50	¥ 457.40	7.8	3.8	2.0
LJ1636L2	15.0	10.0	20.0	\$ 54.90	£ 34.60	€ 51.10	¥ 524.30	7.8	3.8	2.0
LJ1095L1	19.0	16.0	18.0	\$ 62.60	£ 39.40	€ 58.20	¥ 597.80	9.8	6.1	2.0
LJ1095L2	19.0	16.0	32.0	\$ 71.50	£ 45.00	€ 66.50	¥ 682.80	9.8	6.1	2.0
LJ1155L1	19.7	16.0	18.0	\$ 62.90	£ 39.60	€ 58.50	¥ 600.70	10.2	5.9	2.0
LJ1155L2	19.7	16.0	32.0	\$ 71.80	£ 45.20	€ 66.80	¥ 685.70	10.2	5.9	2.0

AR Coating Plot on Next Page

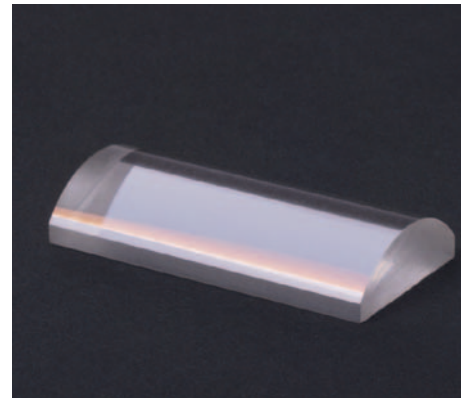
BK7: Plano-Convex Cylindrical Lenses

Standard Broadband AR Coatings

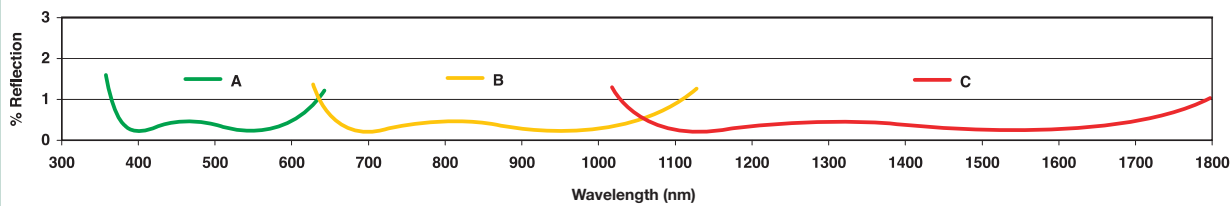
To order the lens with a standard broadband AR Coating, then add the coating code to the Item#, and then add the coating cost to the lens price.

COATING	WAVELENGTH	\$	£	€	RMB
-A	350-650nm	\$ 9.20	£ 5.80	€ 8,60	¥ 87.90
-B	650-1050nm	\$ 9.20	£ 5.80	€ 8,60	¥ 87.90
-C	1050-1620nm	\$ 12.20	£ 7.70	€ 11,30	¥ 116.50

Example: LJ1960L1 Coated with 350-650nm Broadband AR Coating is LJ1960L1-A and the cost is \$47.90 + \$9.20 = \$57.10.



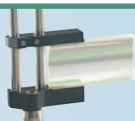
Broadband AR Coatings



Plano-Convex Cylindrical Lenses: Material BK7, f = 20-50mm

ITEM#	f (mm)	H (mm)	L (mm)	PRICE UNCOATED (for Coated Lens Add Suffix)				R (mm)	t _c (mm)	t _e (mm)
				\$	£	€	RMB			
LJ1960L1	20.0	10.0	12.0	\$ 47.90	£ 30.20	€ 44,50	¥ 457.40	10.3	3.3	2.0
LJ1960L2	20.0	10.0	20.0	\$ 54.90	£ 34.60	€ 51,10	¥ 524.30	10.3	3.3	2.0
LJ1328L1	20.0	15.0	17.0	\$ 59.90	£ 37.70	€ 55,70	¥ 572.00	10.3	5.2	2.0
LJ1328L2	20.0	15.0	30.0	\$ 68.90	£ 43.40	€ 64,10	¥ 658.00	10.3	5.2	2.0
LJ1638L1	22.2	12.5	15.0	\$ 54.90	£ 34.60	€ 51,10	¥ 524.30	11.5	3.9	2.0
LJ1638L2	22.2	12.5	25.0	\$ 62.90	£ 39.60	€ 58,50	¥ 600.70	11.5	3.9	2.0
LJ1810L1	25.0	10.0	12.0	\$ 47.90	£ 30.20	€ 44,50	¥ 457.40	12.9	3.0	2.0
LJ1810L2	25.0	10.0	20.0	\$ 54.90	£ 34.60	€ 51,10	¥ 524.30	12.9	3.0	2.0
LJ1075L1	25.0	20.0	22.0	\$ 71.80	£ 45.20	€ 66,80	¥ 685.70	12.9	6.7	2.0
LJ1075L2	25.0	20.0	40.0	\$ 82.80	£ 52.20	€ 77,00	¥ 790.70	12.9	6.7	2.0
LJ1014L1	25.4	16.0	18.0	\$ 62.90	£ 39.60	€ 58,50	¥ 600.70	13.1	4.7	2.0
LJ1014L2	25.4	16.0	32.0	\$ 71.80	£ 45.20	€ 66,80	¥ 685.70	13.1	4.7	2.0
LJ1622L1	25.4	25.4	28.0	\$ 86.80	£ 54.70	€ 80,70	¥ 828.90	13.1	11.8	2.0
LJ1622L2	25.4	25.4	51.0	\$ 97.80	£ 61.60	€ 91,00	¥ 934.00	13.1	11.8	2.0
LJ1212L1	30.0	20.0	22.0	\$ 71.80	£ 45.20	€ 66,80	¥ 685.70	15.5	5.7	2.0
LJ1212L2	30.0	20.0	40.0	\$ 82.80	£ 52.20	€ 77,00	¥ 790.70	15.5	5.7	2.0
LJ1765L1	38.1	25.4	28.0	\$ 86.80	£ 54.70	€ 80,70	¥ 828.90	19.7	6.6	2.0
LJ1765L2	38.1	25.4	51.0	\$ 97.80	£ 61.60	€ 91,00	¥ 934.00	19.7	6.6	2.0
LJ1402L1	40.0	10.0	12.0	\$ 47.90	£ 30.20	€ 44,50	¥ 457.40	20.7	2.6	2.0
LJ1402L2	40.0	10.0	20.0	\$ 54.90	£ 34.60	€ 51,10	¥ 524.30	20.7	2.6	2.0
LJ1125L1	40.0	20.0	22.0	\$ 71.80	£ 45.20	€ 66,80	¥ 685.70	20.7	4.6	2.0
LJ1125L2	40.0	20.0	40.0	\$ 82.80	£ 52.20	€ 77,00	¥ 790.70	20.7	4.6	2.0
LJ1821L1	50.0	20.0	22.0	\$ 71.80	£ 45.20	€ 66,80	¥ 685.70	25.8	4.0	2.0
LJ1821L2	50.0	20.0	40.0	\$ 82.80	£ 52.20	€ 77,00	¥ 790.70	25.8	4.0	2.0
LJ1695L1	50.0	30.0	32.0	\$ 97.80	£ 61.60	€ 91,00	¥ 934.00	25.8	6.8	2.0
LJ1695L2	50.0	30.0	60.0	\$ 111.30	£ 70.10	€ 103,50	¥ 1,062.90	25.8	6.8	2.0

RELATED PRODUCT



CYLINDRICAL LENS HOLDER

Holds up to 32mm lenses in height. Universal mounting hole. Lens sold separately.

ITEM#	\$	£	€	RMB
CH1A	\$ 53.60	£ 33.80	€ 49,80	¥ 511.90

See Page 158 for More Details.

- Optical Systems
- Free Space Isolators
- E-O Devices
- Spherical Singlets
- Multi-Element Lenses
- Cylindrical Lenses**
- Aspheric Lenses
- Mirrors
- Diffusers & Lens Arrays
- Windows
- Prisms
- Gratings
- Polarization Optics
- Beamsplitters
- Filters & Attenuators
- Gas Cells

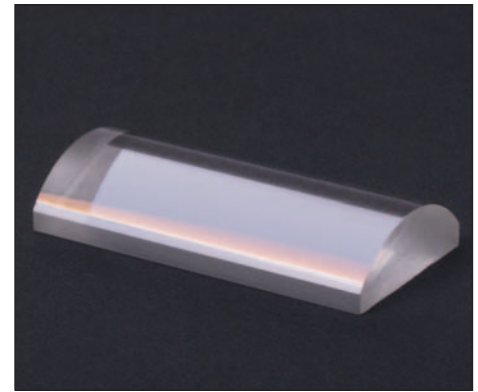
- Optical Systems
- Free Space Isolators
- E-O Devices
- Spherical Singlets
- Multi-Element Lenses
- Cylindrical Lenses**
- Aspheric Lenses
- Mirrors
- Diffusers & Lens Arrays
- Windows
- Prisms
- Gratings
- Polarization Optics
- Beamsplitters
- Filters & Attenuators
- Gas Cells

Standard Broadband AR Coatings

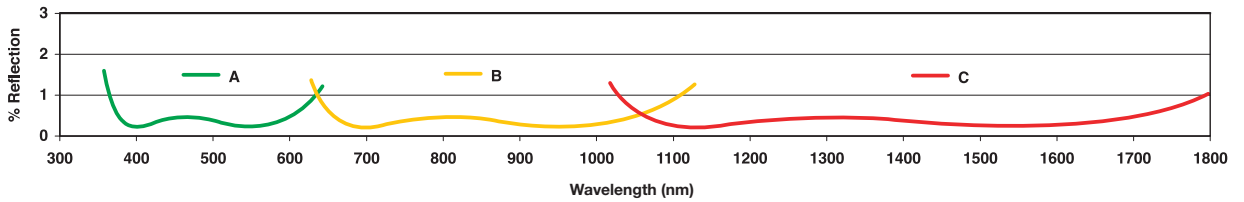
To order the lens with a standard broadband AR Coating, add the coating code to the Item#, and then add the coating cost to the lens price.

COATING	WAVELENGTH	\$	£	€	RMB
-A	350-650nm	\$ 9.20	£ 5.80	€ 8,60	¥ 87.90
-B	650-1050nm	\$ 9.20	£ 5.80	€ 8,60	¥ 87.90
-C	1050-1620nm	\$ 12.20	£ 7.70	€ 11,30	¥ 116.50

Example: LJ1728L1 Coated with 350-650nm Broadband AR Coating is LJ1728L1-A and the cost is \$149.60 + \$9.20 = \$158.80.



Broadband AR Coatings



Plano-Convex Cylindrical Lenses: Material BK7, f = 50.8 - 130mm (continued)

ITEM#	f (mm)	H (mm)	L (mm)	PRICE UNCOATED (for Coated Lens Add Suffix)				R (mm)	t _c (mm)	t _e (mm)
				\$	£	€	RMB			
LJ1728L1	50.8	50.8	53.0	\$ 149.60	£ 94.20	€ 139,10	¥ 1,428.70	26.4	21.6	2.0
LJ1728L2	50.8	50.8	90.0	\$ 169.60	£ 106.80	€ 157,70	¥ 1,619.70	26.4	21.6	2.0
LJ1430L1	60.0	30.0	32.0	\$ 97.80	£ 61.60	€ 91,00	¥ 934.00	31.0	5.9	2.0
LJ1430L2	60.0	30.0	60.0	\$ 111.70	£ 70.40	€ 103,90	¥ 1,066.70	31.0	5.9	2.0
LJ1036L1	60.0	60.0	62.0	\$ 169.10	£ 106.50	€ 157,30	¥ 1,614.90	31.0	25.2	2.0
LJ1036L2	60.0	60.0	95.0	\$ 197.40	£ 124.40	€ 183,60	¥ 1,885.20	31.0	25.2	2.0
LJ1993L1	62.9	50.8	53.0	\$ 149.10	£ 93.90	€ 138,70	¥ 1,423.90	32.5	14.2	2.0
LJ1993L2	62.9	50.8	95.0	\$ 169.10	£ 106.50	€ 157,30	¥ 1,614.90	32.5	14.2	2.0
LJ1477L1	70.0	30.0	32.0	\$ 97.80	£ 61.60	€ 91,00	¥ 934.00	36.2	5.3	2.0
LJ1477L2	70.0	30.0	60.0	\$ 111.70	£ 70.40	€ 103,90	¥ 1,066.70	36.2	5.3	2.0
LJ1703L1	75.0	50.8	53.0	\$ 149.10	£ 93.90	€ 138,70	¥ 1,423.90	38.8	11.5	2.0
LJ1703L2	75.0	50.8	95.0	\$ 169.10	£ 106.50	€ 157,30	¥ 1,614.90	38.8	11.5	2.0
LJ1054L1	75.6	25.4	28.0	\$ 86.80	£ 54.70	€ 80,70	¥ 828.90	39.1	5.1	3.0
LJ1054L2	75.6	25.4	51.0	\$ 97.80	£ 61.60	€ 91,00	¥ 934.00	39.1	5.1	3.0
LJ1258L1	75.6	50.8	53.0	\$ 149.10	£ 93.90	€ 138,70	¥ 1,423.90	39.1	12.4	3.0
LJ1258L2	75.6	50.8	95.0	\$ 169.10	£ 106.50	€ 157,30	¥ 1,614.90	39.1	12.4	3.0
LJ1105L1	80.0	20.0	22.0	\$ 71.80	£ 45.20	€ 66,80	¥ 685.70	41.3	4.2	3.0
LJ1105L2	80.0	20.0	40.0	\$ 82.80	£ 52.20	€ 77,00	¥ 790.70	41.3	4.2	3.0
LJ1567L1	100.0	30.0	32.0	\$ 97.80	£ 61.60	€ 91,00	¥ 934.00	51.7	5.2	3.0
LJ1567L2	100.0	30.0	60.0	\$ 111.30	£ 70.10	€ 103,50	¥ 1,062.90	51.7	5.2	3.0
LJ1640L1	130.0	30.0	32.0	\$ 97.70	£ 61.60	€ 90,90	¥ 933.00	67.2	4.7	3.0
LJ1640L2	130.0	30.0	60.0	\$ 111.30	£ 70.10	€ 103,50	¥ 1,062.90	67.2	4.7	3.0

APPLICATION IDEA



KINEMATIC CYLINDRICAL LENS HOLDER

Holds up to 65mm lenses in height. Lens sold separately.

ITEM#	\$	£	€	RMB
KM100C	\$ 85.70	£ 54.00	€ 79,70	¥ 818.40

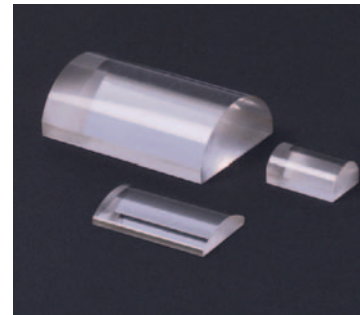
*One version for both imperial and metric mounting.

See Page 158 for More Details.

BK7: Plano-Convex Cylindrical Lenses

Specifications

- **Material:** BK7
- **Wavelength Range:** 350nm-2.0μm
- **Design Wavelength:** 587.6nm
- **Length Tolerance:** +0.00/-0.10mm
- **Height Tolerance:** +0.00/-0.10mm
- **Focal Length Tolerance:** ±1%
- **Scratch/Dig:** 60/40
- **Centration:**
For $f \leq 50\text{mm}$: $\leq 5\text{arcmin}$
For $f > 50\text{mm}$: $\leq 3\text{arcmin}$
- **Clear Aperture:** >90%



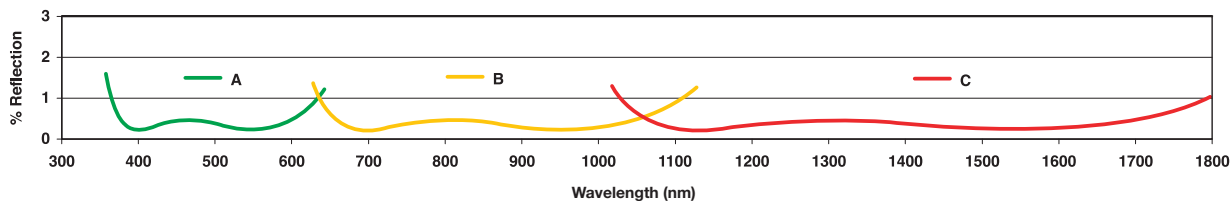
COATING	WAVELENGTH	\$	£	€	RMB
-A	350-650nm	\$ 9.20	£ 5.80	€ 8,60	¥ 87.90
-B	650-1050nm	\$ 9.20	£ 5.80	€ 8,60	¥ 87.90
-C	1050-1620nm	\$ 12.20	£ 7.70	€ 11,30	¥ 116.50

Standard Broadband AR Coatings

To order the lens with a standard broadband AR Coating, add the coating code to the Item#, and then add the coating cost to the lens price.

Example: LJ1934L1 Coated with 350-650nm Broadband AR Coating is LJ1934L1-A and the cost would be \$71.80 + \$9.20 = \$81.00.

Broadband AR Coatings



Plano-Convex Cylindrical Lenses: Material BK7, f = 150 - 1000mm (continued)

ITEM#	f (mm)	H (mm)	L (mm)	PRICE UNCOATED (For Coated Lens Add Suffix)				R (mm)	t _c (mm)	t _e (mm)
				\$	£	€	RMB			
LJ1934L1	150.0	20.0	22.0	\$ 71.80	£ 45.20	€ 66,80	¥ 685.70	77.5	3.6	3.0
LJ1934L2	150.0	20.0	40.0	\$ 82.80	£ 52.20	€ 77,00	¥ 790.70	77.5	3.6	3.0
LJ1629L1	150.0	30.0	32.0	\$ 97.80	£ 61.60	€ 91,00	¥ 934.00	77.5	4.5	3.0
LJ1629L2	150.0	30.0	60.0	\$ 111.30	£ 70.10	€ 103,50	¥ 1,062.90	77.5	4.5	3.0
LJ1895L1	150.0	100.0	90.0	\$ 268.80	£ 169.30	€ 250,00	¥ 2,567.00	77.5	21.3	3.0
LJ1895L2	150.0	100.0	145.0	\$ 339.20	£ 213.70	€ 315,50	¥ 3,239.40	77.5	21.3	3.0
LJ1653L1	200.0	30.0	32.0	\$ 97.80	£ 61.60	€ 91,00	¥ 934.00	103.4	4.1	3.0
LJ1653L2	200.0	30.0	60.0	\$ 111.30	£ 70.10	€ 103,50	¥ 1,062.90	103.4	4.1	3.0
LJ1309L1	200.0	100.0	90.0	\$ 268.80	£ 169.30	€ 250,00	¥ 2,567.00	103.4	15.9	3.0
LJ1309L2	200.0	100.0	145.0	\$ 359.10	£ 226.20	€ 334,00	¥ 3,429.40	103.4	15.9	3.0
LJ1277L1	250.0	20.0	22.0	\$ 72.70	£ 45.80	€ 67,60	¥ 694.30	129.2	3.4	3.0
LJ1277L2	250.0	20.0	40.0	\$ 83.00	£ 52.30	€ 77,20	¥ 792.70	129.2	3.4	3.0
LJ1267L1	250.0	60.0	62.0	\$ 169.10	£ 106.50	€ 157,30	¥ 1,614.90	129.2	6.5	3.0
LJ1267L2	250.0	60.0	95.0	\$ 197.40	£ 124.40	€ 183,60	¥ 1,885.20	129.2	6.5	3.0
LJ1558L1	300.0	30.0	32.0	\$ 97.80	£ 61.60	€ 91,00	¥ 934.00	155.1	3.7	3.0
LJ1558L2	300.0	30.0	60.0	\$ 111.30	£ 70.10	€ 103,50	¥ 1,062.90	155.1	3.7	3.0
LJ1996L1	300.0	60.0	62.0	\$ 169.10	£ 106.50	€ 157,30	¥ 1,614.90	155.1	5.9	3.0
LJ1996L2	300.0	60.0	95.0	\$ 197.40	£ 124.40	€ 183,60	¥ 1,885.20	155.1	5.9	3.0
LJ1363L1	400.0	30.0	32.0	\$ 97.80	£ 61.60	€ 91,00	¥ 934.00	206.7	3.5	3.0
LJ1363L2	400.0	30.0	60.0	\$ 111.70	£ 70.40	€ 103,90	¥ 1,066.70	206.7	3.5	3.0
LJ1144L1	500.0	30.0	32.0	\$ 97.80	£ 61.60	€ 91,00	¥ 934.00	258.4	3.4	3.0
LJ1144L2	500.0	30.0	60.0	\$ 111.70	£ 70.40	€ 103,90	¥ 1,066.70	258.4	3.4	3.0
LJ1836L1	700.0	30.0	32.0	\$ 97.80	£ 61.60	€ 91,00	¥ 934.00	361.8	3.3	3.0
LJ1836L2	700.0	30.0	60.0	\$ 111.30	£ 70.10	€ 103,50	¥ 1,062.90	361.8	3.3	3.0
LJ1516L1	1000.0	30.0	32.0	\$ 97.80	£ 61.60	€ 91,00	¥ 934.00	516.8	3.2	3.0
LJ1516L2	1000.0	30.0	60.0	\$ 111.70	£ 70.40	€ 103,90	¥ 1,066.70	516.8	3.2	3.0

- Optical Systems
- Free Space Isolators
- E-O Devices
- Spherical Singlets
- Multi-Element Lenses
- Cylindrical Lenses**
- Aspheric Lenses
- Mirrors
- Diffusers & Lens Arrays
- Windows
- Prisms
- Gratings
- Polarization Optics
- Beamsplitters
- Filters & Attenuators
- Gas Cells