

## S150R - May 30, 2018

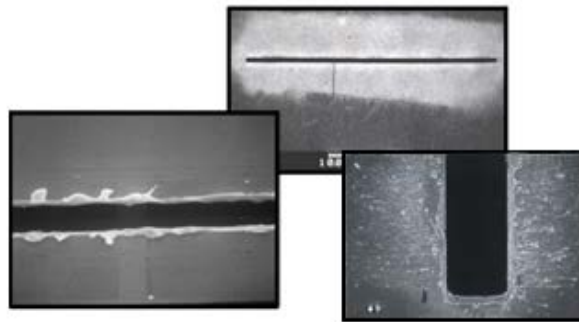
Item # S150R was discontinued on May 30, 2018. For informational purposes, this is a copy of the website content at that time and is valid only for the stated product.

### MOUNTED OPTICAL SLITS

- ▶ 12 Slit Widths Available Ranging from 5-200  $\mu\text{m}$
- ▶ Ø1" Housing is SM1 Compatible
- ▶ High Damage Threshold



S50RH



[Hide Overview](#)

#### OVERVIEW

##### Optical Slit Dimensions & Material

- Slit Widths Available: 5 - 200  $\mu\text{m}$  (See Table to Right for Details)
- Slit Length: 3 mm
- Slit Thickness: 12.7  $\mu\text{m}$
- Housing: Aluminum or Black Stainless Steel with Ø1" Outer Diameter x 0.10" Thick
- Slit Material: 302 Stainless Steel w/ Black Oxide Finish
- Unmounted Slit: Ø3/8" (9.5 mm) x 0.0005" (12.8  $\mu\text{m}$ ) Thick
- Position Tolerance of Slit: Ø0.006" (Ø0.15 mm) within the Foil Disk

##### Damage Thresholds

- $5 \times 10^4$  W/mm<sup>2</sup>, 75 ns Pulse @ 700 nm
- $1 \times 10^5$  W/mm<sup>2</sup>, 10 ns Pulse @ 700 nm
- $1 \times 10^3$  W/mm<sup>2</sup>, CW @ 10.6  $\mu\text{m}$

Item #	Slit Width	Tolerance	Housing Material
S5RH	5 $\mu\text{m}$	±1 $\mu\text{m}$	Black Stainless Steel
S10RH	10 $\mu\text{m}$	±1 $\mu\text{m}$	
S15RH	15 $\mu\text{m}$	±1.5 $\mu\text{m}$	
S20RH	20 $\mu\text{m}$	±2 $\mu\text{m}$	
S30RH	30 $\mu\text{m}$	±2 $\mu\text{m}$	
S40RH	40 $\mu\text{m}$	±3 $\mu\text{m}$	
S50RH	50 $\mu\text{m}$	±2 $\mu\text{m}$	
S100RH	100 $\mu\text{m}$	±4 $\mu\text{m}$	
S150R	150 $\mu\text{m}$	±4 $\mu\text{m}$	Aluminum
S200RH	200 $\mu\text{m}$	±4 $\mu\text{m}$	Black Stainless Steel

These optical slits are mounted in a Ø1" plate, perfect for mounting in our SM1-series lens tubes (SM1L03). The slit in the foil disk is not necessarily aligned horizontally or vertically during the assembly process.

If you do not see what you need in our stocked offerings below, it is possible to special order slits that are fabricated from different substrate materials, have different slit sizes, incorporate multiple slits in one foil, or provide different slit configurations. Customized housings are also available. Please contact Technical

Support to discuss your specific needs.

[Hide Mounted Optical Slits](#)

Mounted Optical Slits

Part Number	Description	Price	Availability
S5RH	Ø1" Mounted Slit, 5 ± 1 µm Wide, 3 mm Long	\$116.00	Today
S10RH	NEW! Ø1" Mounted Slit, 10 ± 1 µm Wide, 3 mm Long	\$110.00	Today
S15RH	NEW! Ø1" Mounted Slit, 15 ± 1.5 µm Wide, 3 mm Long	\$110.00	Today
S20RH	Ø1" Mounted Slit, 20 ± 2 µm Wide, 3 mm Long	\$110.00	Today
S30RH	NEW! Ø1" Mounted Slit, 30 ± 2 µm Wide, 3 mm Long	\$101.00	Today
S40RH	NEW! Ø1" Mounted Slit, 40 ± 3 µm Wide, 3 mm Long	\$95.75	Today
S50RH	NEW! Ø1" Mounted Slit, 50 ± 2 µm Wide, 3 mm Long	\$95.75	Today
S100RH	NEW! Ø1" Mounted Slit, 100 ± 4 µm Wide, 3 mm Long	\$95.75	Today
S150R	Ø1" Mounted Slit, 150 ± 4 µm Wide, 3 mm Long	\$95.75	3-5 Days
S200RH	Ø1" Mounted Slit, 200 ± 4 µm Wide, 3 mm Long	\$95.75	Today



150μm