

56 Sparta Avenue • Newton, New Jersey 07860
 (973) 300-3000 Sales • (973) 300-3600 Fax
 www.thorlabs.com

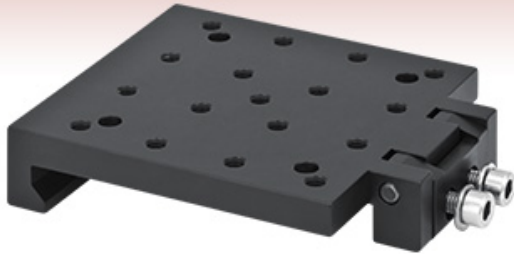


XT95P11 - SEP 12, 2018

Item # XT95P11 was discontinued on SEP 12, 2018. For informational purposes, this is a copy of the website content at that time and is valid only for the stated product.

MOUNTING PLATFORMS FOR 95 MM RAILS

- ▶ Add Arrays of Mounting Holes to 95 mm Optical Rail
- ▶ Positioned by Sliding Along the Rail



XT95P11
Drop-On Rail
Carriage, 3.74" Long



XT95RC1
Drop-On Rail Carriage,
1" Long



XT95P12
Rail Plate for 95 mm Rails

OVERVIEW

Features

- 1/4"-20 (M6) Tapped Hole Arrays
- Fastened to Rail Side and Positioned by Sliding
- XT95P11(/M) Drop-On Rail Carriage can Also be Attached to Rail End

Our mounting platforms for 95 mm rails contain a 1/4"-20 (M6) tapped hole matrix that provides mechanical compatibility between 95 mm rails and standard optomechanics.

Drop-On Rail Carriages

The Drop-On Rail Carriages can be dropped into place anywhere along an exposed rail side, can slide along the wings of the rail, and are fastened down by the side-mounted 1/4"-20 (M6) locking screws. The XT95P11(/M) can also be fastened to the end of a 95 mm rail using four 1/4" (M6) counterbores. Rail carriages with lengths of 1.00" (25.0 mm), 2.00" (50.0 mm), and 3.74" (95.0 mm) are available.

Rail Plate








The XT95P12(/M) Rail Plate slides along the T-Slots on the rail side and is fastened down by four 1/4"-20 (M6) locking screws. Access to the end of the rail is necessary to insert or remove the plate.

Height Difference

There is a difference in mounting height between the drop-on rail carriages and the rail plates, as shown between the XT95P11(/M) and XT95P12(/M) to the right. For the imperial parts, this difference in height is 0.30" (7.6 mm). For the metric parts, this difference is 7.5 mm (0.29").

95 mm Rail Construction

Thorlabs' product family for 95 mm rails includes angle adapters, leveling feet, and breadboard mounting adapters. In addition, we manufacture mounting platforms and T-Nuts that provide compatibility with standard optomechanics. Together with size adapters that incorporate 66 mm rails into an XT95 setup, these tools provide a complete family of rigid, versatile building blocks suited for virtually any optomechanical setup.

XT95 95 mm Optical Rail Accessories			
			
Rails		Angle Adapters	Leveling Feet
			
Breadboard Mounting	Mounting Platforms	T-Nuts and Screws	Size Adapters



The difference between the mounting height of the imperial drop-on rail carriage and the imperial rail plate is 0.3" (7.6 mm). For the metric parts, the height difference is 7.5 mm (0.29").

Drop-On Rail Carriages for 95 mm Rails

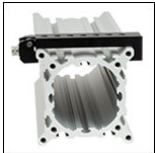
- ▶ Can Slide Along 95 mm Rail Prior to Lockdown
 - ▶ Provide Array of Mounting Holes for Components on Side of 95 mm Rail
 - ▶ Inserted and Removed Anywhere Along a Rail, as Shown to the Right
 - ▶ Available in Lengths from 1.00" to 3.74" (25.0 mm to 95.0 mm)
- The drop-on rail carriages can be attached anywhere along an exposed rail side. The XT95P11 is shown here.

These Drop-On Rail Carriages can clamp to the side of a 95 mm rail by tightening the side-located 1/4"-20 (M6) locking screws. The swinging clamping arm provides ample clearance to lift the carriage off when the locking screws are loosened, allowing the carriage to be inserted anywhere along an exposed rail side.

Each rail carriage has an array of 1/4"-20 (M6) tapped holes for mounting optomechanical components; see the table below for details. The XT95P11 also features four counterbored holes positioned such that it can also fasten to the inner M6 taps on the end of a standard 95 mm rail using four M6 cap screws (not included). In this orientation, shown below, optomechanical components can be attached to the rail ends. Alternatively, the clamping arm can be used to hold another XT95 rail at a right angle.

Drop-On Rail Carriage Specifications			
Item #	Length	Mounting Taps	Locking Screw
XT95RC1	1.00"	1/4"-20 (7 Places)	1/4"-20 (3/16" Hex)
XT95RC1/M	25.0 mm	M6 (7 Places)	M6 (5.0 mm Hex)
XT95RC2	2.00"	1/4"-20 (21 Places)	1/4"-20 (3/16" Hex)
XT95RC2/M	50.0 mm	M6 (21 Places)	M6 (5.0 mm Hex)
XT95P11	3.74"	1/4"-20 (17 Places), 1/4" Counterbore (4 Places)	Two 1/4"-20 (3/16" Hex)
XT95P11/M	95.0 mm	M6 (17 Places), M6 Counterbore (4 Places)	Two M6 (5.0 mm Hex)

For a carriage with a lower profile when mounted on a rail, please consider the XT95P12(/M) Rail Plate below.



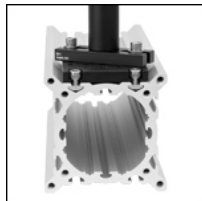
Click to Enlarge
XT95RC1 1" Long
Drop-On Rail Carriage
on Rail Side



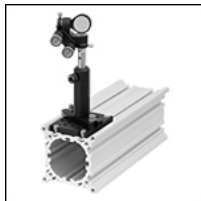
Click to Enlarge
XT95P11 Mounted on
Rail End via 1/4"
Counterbores

Part Number	Description	Price	Availability
XT95RC1/M	NEW! Drop-On Rail Carriage for 95 mm Rails, 25.0 mm Long, M6 Tapped Holes	\$74.00	Today
XT95RC2/M	NEW! Drop-On Rail Carriage for 95 mm Rails, 50.0 mm Long, M6 Tapped Holes	\$87.00	Today
XT95P11/M	Drop-On Rail Carriage for 95 mm Rails, 95.0 mm Long, M6 Tapped Holes	\$83.39	Lead Time
XT95RC1	NEW! Drop-On Rail Carriage for 95 mm Rails, 1.00" Long, 1/4"-20 Tapped Holes	\$74.00	Today
XT95RC2	NEW! Drop-On Rail Carriage for 95 mm Rails, 2.00" Long, 1/4"-20 Tapped Holes	\$87.00	Today
XT95P11	Drop-On Rail Carriage for 95 mm Rails, 3.74" Long, 1/4"-20 Tapped Holes	\$83.39	Today

Rail Plate for 95 mm Rails



Click to Enlarge
[APPLIST]
[APPLIST]
Clamping Mechanism



Click to Enlarge
[APPLIST]
[APPLIST]
Mounted Optomechanical
Assembly

- ▶ Slides Along 95 mm Rail Prior to Lockdown
 - ▶ Contains Array of Tapped and Counterbored Holes Separated by 0.5" (12.5 mm)
 - ▶ Inserted and Removed at the Rail Ends Only, as Shown to the Right
- The XT95P12 is inserted through the rail channels.

The XT95P12(/M) Rail Plate consists of a closely packed array of seventeen 1/4"-20 (M6) tapped holes and four 1/4" (M6) counterbores. It fastens to a 95 mm rail by tightening the four included 1/4"-20 (M6) cap screws at the corners. These locking screws are attached to two included T-Nuts that span the length of the rail plate and slide into the T-Slots on the rail side. Click on the image below to the left for details on the clamping mechanism.

Please note that the XT95P12 requires the rail end to be unobstructed for installation. For a platform that can be dropped in anywhere along a rail, please see the XT95P11(/M) Rail Carriage shown

above.

Part Number	Description	Price	Availability
XT95P12/M	Rail Plate for 95 mm Rails, 81.3 mm Long, M6 Tapped Holes	\$46.16	Today
XT95P12	Rail Plate for 95 mm Rails, 3.15" Long, 1/4"-20 Tapped Holes	\$46.16	Today

Visit the *Mounting Platforms for 95 mm Rails* page for pricing and availability information:
https://www.thorlabs.com/newgrouppage9.cfm?objectgroup_id=6920