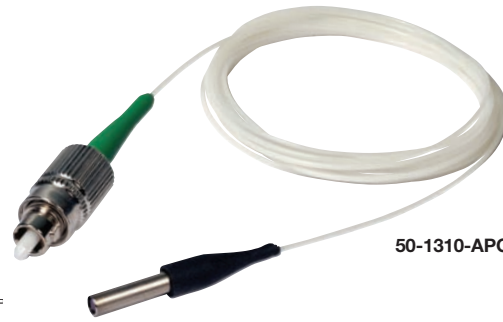
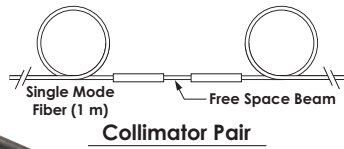
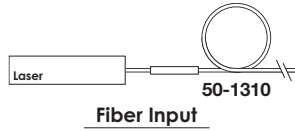


## GRIN Fiber Collimators



50-1310-APC



Collimator Surfaces are AR Coated

### Features

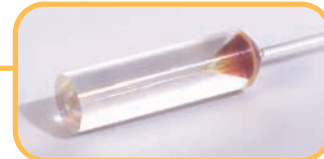
- Maximum Power 300 mW
- Ø1.8 mm Clear Aperture
- AR Coated on all Collimator Surfaces
- Input Coupler
- Output Collimator
- Fiber Length: 1 m

Please refer to our website for complete models and drawings.

ITEM #	\$	£	€	RMB	OPERATING WAVELENGTH	FIBER	CONNECTOR
50-1310	\$ 83.70	£ 60.26	€ 72.82	¥ 667.09	1280 - 1340 nm	SMF-28e+	None
50-1310-FC	\$ 113.70	£ 81.86	€ 98.92	¥ 906.19	1280 - 1340 nm	SMF-28e+	FC/PC
50-1310-APC	\$ 133.70	£ 96.26	€ 116.32	¥ 1,065.59	1280 - 1340 nm	SMF-28e+	FC/APC
50-1550	\$ 59.20	£ 42.62	€ 51.50	¥ 471.82	1520 - 1580 nm	SMF-28e+	None
50-1550-FC	\$ 89.20	£ 64.22	€ 77.60	¥ 710.92	1520 - 1580 nm	SMF-28e+	FC/PC
50-1550-APC	\$ 109.20	£ 78.62	€ 95.00	¥ 870.32	1520 - 1580 nm	SMF-28e+	FC/APC

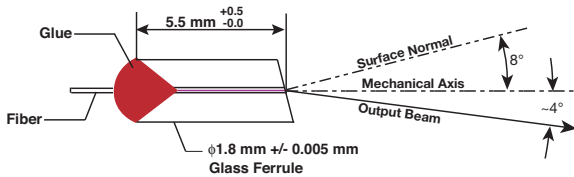
## Pigtailed Ferrules, AR Coated

Thorlabs' pigtailed glass ferrules feature 1.5 meters of single mode fiber and a 0° or 8° angled face, which is AR coated to minimize back reflection (return loss), as well as insertion loss. Pigtailed ferrules are ideal for numerous applications, including the manufacture of optical switches, isolators, circulators, and couplers.



### Pigtail Specifications

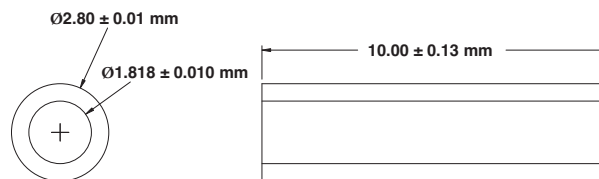
- Ferrule Diameter: 1.800 mm ± 5 µm
- Ferrule Length: 5.5 mm +0.5/-0.0 mm
- Wedge Angles: 0.0°, 8.0°
- Wedge Tolerance: ±0.2°
- AR Coating: R<0.25% @ 630, 830, 1060, 1310, or 1550 nm
- Fiber Length: 1.5 m



ITEM #	\$	£	€	RMB	WEDGE ANGLE	AR COATING	FIBER PIGTAIL
SMPF0206	\$ 26.83	£ 19.32	€ 23,34	¥ 213.84	0°	630 nm	SM600
SMPF0208	\$ 26.83	£ 19.32	€ 23,34	¥ 213.84	0°	830 nm	SM800-5.6-125
SMPF0210	\$ 26.83	£ 19.32	€ 23,34	¥ 213.84	0°	1060 nm	HI1060
SMPF0213	\$ 18.00	£ 12.96	€ 15,66	¥ 143.46	0°	1300 nm	SMF-28e+
SMPF0215	\$ 18.00	£ 12.96	€ 15,66	¥ 143.46	0°	1560 nm	SMF-28e+
SMPF0106	\$ 26.83	£ 19.32	€ 23,34	¥ 213.84	8°	630 nm	SM600
SMPF0108	\$ 26.83	£ 19.32	€ 23,34	¥ 213.84	8°	830 nm	SM800-5.6-125
SMPF0110	\$ 26.83	£ 19.32	€ 23,34	¥ 213.84	8°	1060 nm	HI1060
SMPF0113	\$ 18.00	£ 12.96	€ 15,66	¥ 143.46	8°	1300 nm	SMF-28e+
SMPF0115	\$ 18.00	£ 12.96	€ 15,66	¥ 143.46	8°	1560 nm	SMF-28e+

## GRIN to Ferrule Sleeves

The 51-2800-1800 sleeve allows a GRIN lens to be integrated easily with one of the pigtailed ferrules above. The glass material is transparent in the UV region for curing UV adhesives.



ITEM #	\$	£	€	RMB	DESCRIPTION
51-2800-1800	\$ 5.90	£ 4.25	€ 5,13	¥ 47.02	Sleeve for GRIN Lens and Ferrules, 1.8 mm I.D., 10 mm Long, Borosilicate Glass