



Motorized Lab Jack with 2.00" (50.8 mm) Vertical Travel

- Integral apt™ Controller
(See Pages XXX - XXX for Details)
- Rugged, Dual Pantograph
- Large Array of Mounting Holes
- Power Supply Included

Specifications

- **Maximum Velocity**
 - 4.8 mm/s for Loads <5.5 lbs (2.5 kg)
 - 1.6 mm/s for Loads <33 lbs (15 kg)
- **Load Capacity (Max):**
33 lbs (15 kg)
- **Resolution:** <20 nm
- **Repeatability:** <5 µm µm
- **Travel Range:** 52 mm (2.04")
- **Deck Parallelism:** <250 µm Over Full Range of Travel
- **Deck Pitch:** 0.04°

Controller Specifications

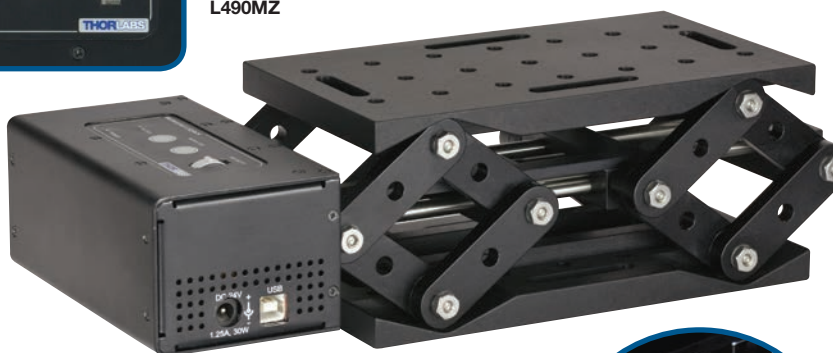
- **Voltage:** 24 VDC
- **Power:** 30 W (Peak)

The L490MZ, a stepper-motor-driven lab jack, features an integrated electronic controller that can be operated either remotely using a PC or manually via the buttons and velocity potentiometer on the control key pad. Parameter settings can be adjusted on the PC and stored in non-volatile memory within the unit itself. When the unit is powered up, these settings are applied automatically. This is particularly useful when the unit is being used manually in the absence of a PC and USB link.

These motorized lab jacks provide a rugged platform ideal for mounting optomechanical sub-assemblies requiring height adjustment. Based upon the dual pantograph design of the manual L490, the L490MZ Motorized Lab Jack offers excellent rigidity and platform parallelism. The large 7.00" x 4.00" (177.8 mm x 101.6 mm) mounting platform supports up to 33 lbs (15 kg) with a smooth vertical adjustment range of 52 mm (2.04"). Both the top and bottom plates offer a generous array of 1/4"-20 (M6 x 1.0) tapped holes and clearance slots for general mounting requirements.



L490MZ



See Page XXX for More Details

| ITEM # | METRIC ITEM # | \$ | £ | € | RMB | DESCRIPTION |
|--------|---------------|-------------|------------|------------|-------------|--|
| L490MZ | L490MZ/M | \$ 1,980.00 | £ 1,425.60 | € 1,722.60 | ¥ 15,780.60 | Motorized Lab Jack with 2.04" (52 mm) Travel |

Have you seen our...

ScienceDesk™ Workstations



SDA150180 Frame
and PerformancePlus Breadboard
shown with Thorlabs' MPM200
Multiphoton Microscopy System

Thorlabs' ScienceDesk™ is a modular workstation with a versatile selection of frames and optional accessories that allows you to build a customized, ergonomic work space for your specific application. New to the line is an active-air frame and 5' x 6' (1500 mm x 1800 mm) breadboard designed to accommodate a multiphoton imaging setup.

- ◆ Rigid, Passive, and Active-Air Welded Steel Frames
- ◆ Stainless Steel Tabletop (With or Without Holes; Nonmagnetic Options also Available)
- ◆ Modular System of Accessories

For more details, see pages XXX - XXX