

Single Mode Fiber: 980 nm

Features

- Shipped from Stock, No Minimums
- HI1060-J9 and HI980-J9 have 900 μm Tight Buffer Outer Jacket
- SM980-5.8-125 has a MFD Matched to Other Fibers Used in EDFA Pump Laser Pigtailed
- 980HP Offers a Tight Second Mode Cutoff Tolerance



ITEM#	OPERATING WAVELENGTH ^a	MODE FIELD DIAMETER ^d	CLADDING	COATING	CUTOFF WAVELENGTH	ATTENUATION MAXIMUM	NA	VENDOR
SM980-5.8-125	980/1064/1550 nm	5.8/6.2/10.4 μm	125 ± 1 μm	245 ± 5 μm	920 ± 50 nm	3 dB/km @ 980 nm	0.13-0.15	Fibercore
HI1060-J9	980 - 1060 nm	5.9 ± 0.3 μm @ 980 nm	125 ± 0.5 μm	245 ± 10 μm	920 ± 50 nm	2.1 dB/km @ 980 nm ^b	0.14	Corning
HI980-J9	980 - 1550 nm	4.2 ± 0.3 μm @ 980 nm	125 ± 0.5 μm	245 ± 10 μm	930 ± 50 nm	≤2.5 dB/km @ 980 nm	0.20	Corning
980HP ^c	980 - 1600 nm	4.2 ± 0.5 μm @ 980 nm	125 ± 1.5 μm	245 ± 15 μm	920 ± 30 nm	<3.5 dB/km @ 980 nm	0.20	Nufern

^a Operating wavelength range is typically 200 nm above the cutoff wavelength

^b Attenuation 1.5 dB/km @ 1060 nm

^c Short-term bend radius ≥6 mm

^d MFD is a nominal, calculated value, estimated at the operating wavelength(s)

Standard Lengths

ITEM#	\$	£	€	RMB	DESCRIPTION
HI1060-10	\$ 68.20	£ 47.10	€ 60.70	¥ 575.70	10 m HI1060 with 900 μm Jacket
HI1060-100	\$ 631.30	£ 435.60	€ 561.90	¥ 5,328.20	100 m HI1060 with 900 μm Jacket

Standard Lengths

ITEM#	\$	£	€	RMB	DESCRIPTION
HI980-10	\$ 102.10	£ 70.50	€ 90.90	¥ 861.80	10 m HI980 with 900 μm Jacket
HI980-100	\$ 909.00	£ 627.30	€ 809.10	¥ 7,672.00	100 m HI980 with 900 μm Jacket

ITEM#	PRICE/m*	\$	£	€	RMB
SM980-5.8-125	1 to 9 m	\$ 5.50	£ 3.80	€ 4.90	¥ 46.50
	10 to 49 m	\$ 4.15	£ 2.85	€ 3.70	¥ 35.10
	50 to 249 m	\$ 3.60	£ 2.50	€ 3.20	¥ 30.40
HI1060-J9	>100 m	\$ 7.90	£ 5.45	€ 7.05	¥ 66.70
HI980-J9	>100 m	\$ 12.20	£ 8.40	€ 10.85	¥ 103.00
980HP	1 to 9 m	\$ 4.80	£ 3.30	€ 4.25	¥ 40.60
	10 to 49 m	\$ 4.10	£ 2.85	€ 3.65	¥ 34.70
	50 to 249 m	\$ 3.35	£ 2.30	€ 3.00	¥ 28.30

*Call for Quantities Over 250 m

Single Mode Fiber: 980 nm to 1620 nm

Features

- Shipped from Stock, No Minimums
- Fibers have Acrylate Coatings
- SMF-28-J9 has a 900 μm Tight Buffer Outer Jacket
- Core-Clad Concentricity: <0.3 μm for 1060XP, <0.5 μm for SMF-28-J9, 1310BHP, and 1550BHP
- 1060XP, 1310BHP, and 1550BHP Offer Tight Second Mode Cutoff Tolerances

Standard Lengths (Longer Lengths Available)

ITEM#	\$	£	€	RMB	DESCRIPTION
SMF-28-10	\$ 5.96	£ 4.10	€ 5.30	¥ 50.30	10 m SMF-28-J9 w/ 900 μm Jacket
SMF-28-100	\$ 51.51	£ 35.55	€ 45.85	¥ 434.80	100 m SMF-28-J9 w/ 900 μm Jacket
SMF-28-1000	\$ 464.60	£ 320.55	€ 413.50	¥ 3,921.30	1000 m SMF-28-J9 w/ 900 μm Jacket

ITEM#	OPERATING WAVELENGTH	MODE FIELD DIAMETER	CLADDING	COATING	CUTOFF WAVELENGTH	MAXIMUM ATTENUATION	NA	VENDOR
1060XP ^d	980 - 1600 nm	6.2 ± 0.5 μm @ 1060 nm	125 ± 0.5 μm	245 ± 10 μm	920 ± 30 nm	<1.5 dB/km @ 1060 nm ^a	0.14	Nufern
SMF-28-J9	1260 - 1600 nm	9.2 μm ^b /10.4 μm ^c	125 ± 0.7 μm	245 ± 5 μm	<1260 nm	≤0.35 dB/km ^b	0.14	Corning
1310BHP ^d	1300 - 1625 nm	8.6 μm ^b /9.7 μm ^c	125 ± 1.0 μm	245 ± 15 μm	1260 ± 30 nm	≤0.5 dB/km ^{b,c}	0.13	Nufern
1550BHP ^d	1460 - 1620 nm	9.5 ± 0.5 μm @ 1550 nm	125 ± 1.0 μm	245 ± 15 μm	1400 ± 50 nm	<0.5 dB/km @ 1550 nm	0.13	Nufern

^a Attenuation 2.1 dB/km @ 980 nm

^b @1310 nm

^c @1550 nm

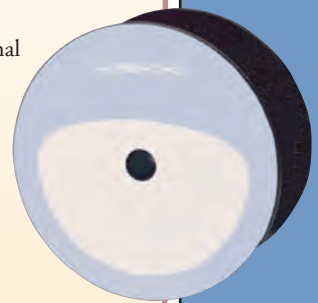
^d Short-term bend radius ≥6 mm

Large Mode Area (LMA) Fibers

Thorlabs offers a range of passive large mode area (LMA) fibers matched with available active LMA fibers such as Liekki's YB1200 and YB2000 product families.

Features

- Core Size: 10 μm, 20 μm, 25 μm, and 40 μm
- Matching with Industry Standard Active Fiber Cladding Geometries of 125, 250, and 400 μm
- Designed to Fit In Octagonal Active Fibers
- Pigtailed for Fiber Lasers and Amplifiers
- Low Signal and Pump Coupling Losses from Passive to Active Fiber



See Page 868

ITEM#	PRICE/m*	\$	£	€	RMB
1060XP	1 to 9 m	\$ 4.85	£ 3.35	€ 4.30	¥ 41.00
	10 to 49 m	\$ 3.90	£ 2.70	€ 3.45	¥ 33.00
	50 to 249 m	\$ 3.40	£ 2.35	€ 3.05	¥ 28.70
SMF-28-J9	>100 m	\$ 0.70	£ 0.50	€ 0.60	¥ 6.00
1310BHP	1 to 9 m	\$ 4.80	£ 3.30	€ 4.25	¥ 40.60
	10 to 49 m	\$ 3.85	£ 2.65	€ 3.45	¥ 32.50
	50 to 249 m	\$ 3.35	£ 2.30	€ 3.00	¥ 28.30
1550BHP	1 to 9 m	\$ 4.80	£ 3.30	€ 4.25	¥ 40.60
	10 to 49 m	\$ 3.85	£ 2.65	€ 3.45	¥ 32.50
	50 to 249 m	\$ 3.35	£ 2.30	€ 3.00	¥ 28.30

*Call for Quantities Over 250 m